

ZIPCodeWorldTM

**Store Locator .NET V2
User Guide**

INTRODUCTION

ZIPCodeWorld™ .NET Store Locator V2 is a web server software that allows website owner to install a robust and fast zip code locator system on their own website written in ASP.NET. The installation of .NET Store Locator V2 control is as easy as drag and drop in the Visual Studio environment. Developers can enable Store Locator V2 service in their websites in less than 10 minutes.

ZIPCodeWorld™ .NET Store Locator V2 allows your visitors to search for store locations, dealers, members, outlets, hotels, ATMs or anything else you can think of, just by entering their zip code. Your visitors simply enter their zip code, and our software will return proximity matches, links to MapQuest®/Yahoo®/Google® for maps and driving directions, contact info, links and more for each record that is closest to them.

ZIPCodeWorld™ .NET Store Locator V2 control queries the ZIPCodeWorld™ United States ZIP Code or PostalCodeWorld™ Canada Postal Code database to lookup the distance by latitude and longitude. No external Internet connection is required to execute this control on server or LAN.

SYSTEM FEATURES

ZIPCodeWorld™ .NET Store Locator V2's features:

1. Supports ASP.NET 2.0+
2. Drag and Drop ASP.NET Control
3. Fully Customizable Interface
4. Secure Admin Control Panel
5. Limit Results by Radius and Records
6. Display General Store Details and Custom Fields
7. Sort Results by Distance, Names and City
8. Free Latitude and Longitude Database (for Year 2000)
9. Supports Canada Postal Code
10. Bulk Store/Dealer Batch Import
11. Supports Location Maps & Directions
12. Supports Miles and Kilometers Measurement
13. Supports Preferred Stores
14. Supports Multi-Category Search

SYSTEM REQUIREMENTS

This section describes the minimum configuration requirements for a computer where the .NET Framework redistributable package is to be installed. If the minimum requirements are not met, ZIPCodeWorld™ Store Locator V2 might not work properly. Specifically, note that you cannot install the .NET Framework redistributable package on a computer running the Microsoft® Windows 95 operating system.

Minimum Platform Requirements

- ✓ Microsoft® Windows 98
- ✓ Microsoft® Windows 98 Second Edition
- ✓ Microsoft® Windows Millennium Edition (Windows Me)
- ✓ Microsoft® Windows NT 4 (Workstation or Server) with Service Pack 6a
- ✓ Microsoft® Windows 2000 (Professional, Server, or Advanced Server) with the latest Windows service pack and critical updates available from the Microsoft Security Web site.
- ✓ Microsoft® Windows XP (Home or Professional)
- ✓ Microsoft® Windows Server 2003 family

Minimum Configuration Requirements

Scenario	CPU Required	RAM Required
Client	Pentium 90 MHz*	32 MB**
Server	Pentium 133 MHz*	128 MB**

* Or the minimum CPU required running the operating system, whichever is higher.

** Or the minimum RAM required running the operating system, whichever is higher.

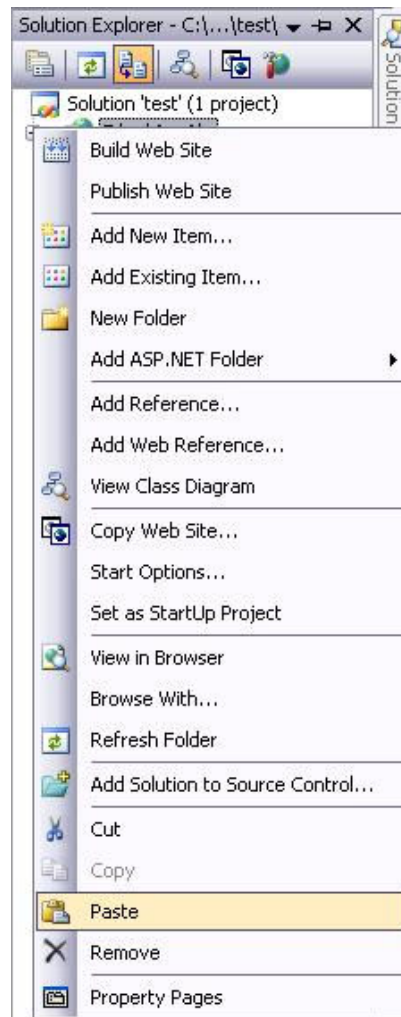
INSTALLATION GUIDE

Download Setup File

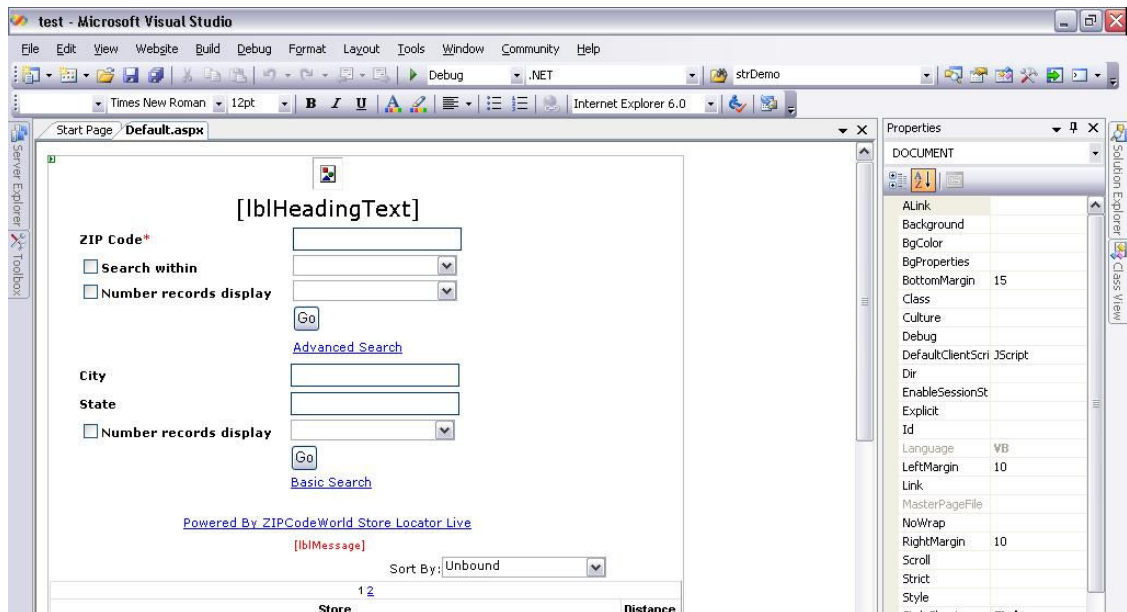
- i. Download the Store Locator V2 Installation File from Web site.
http://www.zipcodeworld.com/samples/ZIPCodeWorld_Store_Locator_V2_Dot_Net_2.0.ZIP
- ii. Extract *ZIPCodeWorld_Store_Locator_V2_Dot_Net_2.0.ZIP* to a temporary folder.
- iii. Make sure the database file *storelocator.mdb* inside the *StoreLocator2.0\Database* folder is writeable. Right click on *storelocator.mdb* -> Properties -> Uncheck read-only option -> Click OK button.
- iv. Add computer users "Internet Guest Account" (IUSR_*computername*) and "Launch IIS Process Account" (IWAM_*computername*) for the folder *StoreLocator2.0\StoreLocatorAdminV2\Import* and assign write permission to both users. Right click on *StoreLocator2.0\StoreLocatorAdminV2\Import* folder -> Sharing and Security -> Select Security Tab -> set write permission -> Click OK button.

Add Control to Project

- v. Open your application solution file in Microsoft® Visual Studio.
- vi. Copy the *StoreLocator2.0* folder from the temporary folder.



- vii. Right click project and select paste.
- viii. Open the page you wish to include StoreLocator control
- ix. Drag *StoreLocatorControl.ascx* and drop at the page
- x. You will see the screen as below.



Configuring Database Connection & Other Settings In Web.Config File

- xi. Open the *Web.Config* file in the *StoreLocator2.0* folder.
- xii. Modify the database connection settings in the *Web.Config* file after `</system.web>` tag. Remember to update the database path or DSN in order to connect to the databases correctly.

ODBC – DBQ (Database access through File Path)

You may change the database folder, but remember to point the database path correctly in the *Web.config*.

```
<appSettings>
  <add key="strConnType" value="Access"/>
  <add key="StrConnZipCodeWorldAccess" value="Driver={Microsoft Access Driver (*.mdb)}; Dbq=[your
  database path]\ZIPCODEWORLD-PREMIUM.MDB;Uid=;Pwd=;"/>
  <add key="StrConnStoreLocatorAccess" value="Driver={Microsoft Access Driver (*.mdb)}; Dbq=[your
  database path]\StoreLocator.mdb;Uid=;Pwd=;"/>
  <add key="StrLicenseKey" value="<your web directory path>\License.key"/>
  <add key="strImportPath" value="<your web directory path>\StoreLocator2.0\StoreLocatorAdminV2\import" />
</appSettings>
```

ODBC – DSN (Database access through Data Source Name)

You need to create System DSN and ODBC Data Source for the following files:

- a) ZIPCODEWORLD-PREMIUM.MDB
- b) StoreLocator.mdb

```
<appSettings>
  <add key="strConnType" value="Access"/>
  <add key="StrConnZipCodeWorldAccess" value="DSN=ZipCodeWorld;Uid=;Pwd=;"/>
  <add key="StrConnStoreLocatorAccess" value="DSN=StoreLocator;Uid=;Pwd=;"/>
  <add key="StrLicenseKey" value="<your web directory path>\License.key"/>
  <add key="strImportPath" value="<your web directory path>\StoreLocator2.0\StoreLocatorAdminV2\import" />
</appSettings>
```

MySQL

```
<appSettings>
  <add key="strConnType" value="MySQL"/>
  <add key="StrConnZipCodeWorldMySQL" value="DRIVER={MySQL ODBC 3.51
Driver};SERVER=vios;DATABASE=zipcodeworld;USER=[User Name];PASSWORD=[Your
Password];OPTION=3;"/>
  <add key="strConnStoreLocatorMySQL" value="DRIVER={MySQL ODBC 3.51
Driver};SERVER=vios;DATABASE=storelocator;USER=[User Name];PASSWORD=[Your
Password];OPTION=3;"/>
  < add key="StrLicenseKey" value="<your web directory path>\License.key"/>
  <add key="strImportPath" value="<your web directory path>\StoreLocator2.0\StoreLocatorAdminV2\import" />
</appSettings>
```

***Note: MySQL ODBC 3.51 driver is required. Please download and install MySQL ODBC 3.51 Driver at <http://dev.mysql.com/downloads/connector/odbc/3.51.html>.**

Microsoft SQL Server

```
<appSettings>
  <add key="strConnType" value="MsSql"/>
  <add key="StrConnZipCodeWorldMsSQL" value="Data Source=127.0.0.1;Initial Catalog=zipcodeworld;User
Id=[User ID];Password=[Your Password];"/>
  <add key="strConnStoreLocatorMsSQL" value="Data Source=127.0.0.1;Initial Catalog=storelocator;User
Id=[User ID];Password=[Your Password];" />
  < add key="StrLicenseKey" value="<your web directory path>\License.key"/>
  <add key="strImportPath" value="<your web directory path>\StoreLocator2.0\StoreLocatorAdminV2\import" />
</appSettings>
```

Once you are done configuring the database settings, you will have to modify the settings for both the *StrLicenseKey* and *strImportPath* settings in the *Web.Config* file. The *StrLicenseKey* is the path to the *License.key* file that is required to run the .NET Store Locator V2 while the *strImportPath* is the path to the folder called *Import* which will be used to store uploaded data files for importing into the database.

You don't need the License.key file if you are just evaluating the Store Locator.

Important Notes

You will need to copy all of the files in the *StoreLocator2.0\bin* folder to the *bin* folder of your web application. This *bin* folder will normally be in the root folder of that web application.

You will also need to remove the *<system.web></system.web>* section from the *Web.Config* file that is in the *StoreLocator2.0* folder so that it does not cause any problem with the main *Web.Config* file in your web application.

USAGE GUIDE

Admin Control Panel

To login, go to the following URL.

<http://localhost/<your application path>/StoreLocator2.0/StoreLocatorAdminV2/default.aspx>

1. Login Page

Login

User Name*

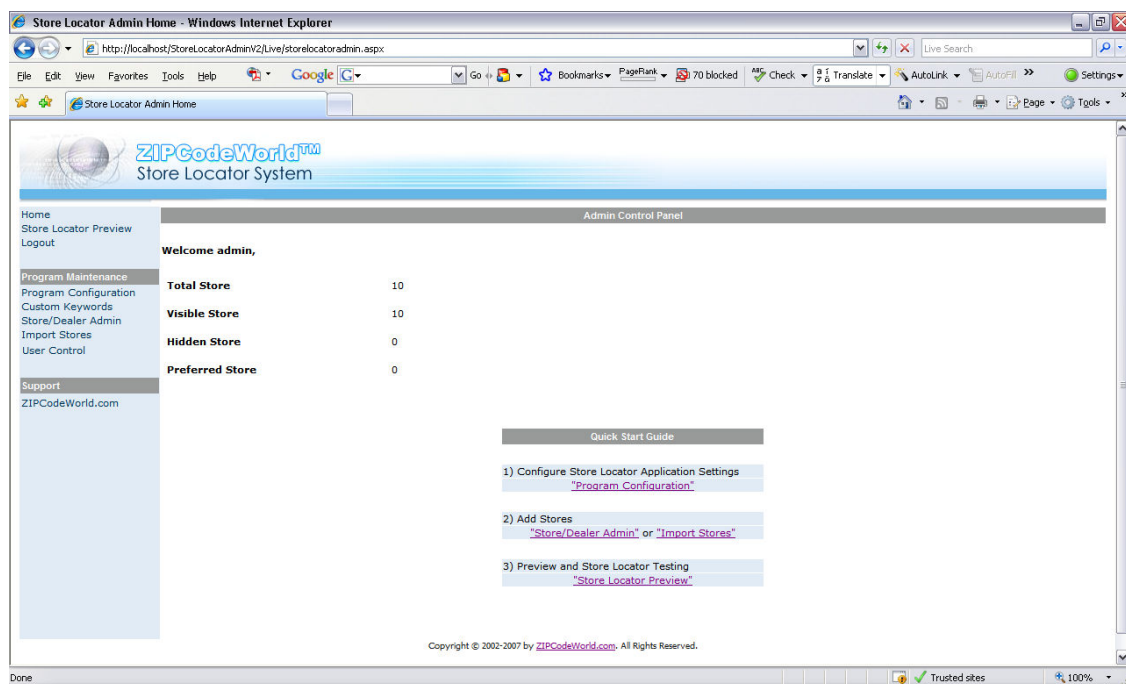
Password*

Login

- i. Enter User Name.
- ii. Enter Password.
- iii. Click Login button.

***Note:** User name and password are required fields. Default user name is “admin” and password is “12345”.

2. Admin Control Panel



The admin control panel shows a summary of total store, visible store, hidden store and preferred store whenever you login to the control panel.

3. Store Locator Preview

- Basic Search

Store Locator

ZIP Code*

☒ **Search within**

10 Miles

☒ **Number record display**

10

Limit search to

☐ Product1 ☐ Product2 ☐ Product3

Go

[Advanced Search](#)

- Enter ZIP Code you wish to query.
- Select the search radius.
- Select max number of records to display (if enable).
- Select categories to further filter the results.
- Click “Go” button to get search results.

- Advanced Search

Store Locator

City

State

☒ **Number record display**

10

Limit search to

☐ Product1 ☐ Product2 ☐ Product3

Go

[Basic Search](#)

- Enter the City and State you wish to query.
- Select max number of records to display.
- Select categories to further filter the results.
- Click “Go” button to get search results.

- Basic Search Results

Sort By: Distance

1	
Stores	Distances
Holbrook-Sun-Vet Sun-Vet Mall - 5801 Sunrise Hwy Holbrook NY 11741 US Tel No: (631) 589-0995	3.13 kilometers Show Map
East Patchogue-Montauk 751 Montauk Hwy Patchogue NY 11772 US Tel No: (631) 654-8733	13.37 kilometers Show Map
Commack-Veteran Hwy 40 Veteran Hwy Commack NY 11725 US Tel No: (631) 499-8932	19.98 kilometers Show Map
City Monticue So S/O	

4. Logout

- When you click on the logout link, the system will show you a logout message and you will be redirected to the default login page after 5-second.

5. Program Configuration

- General Application Setting

General Settings	
Organization Email Address:	<input type="text" value="webmaster@storelocator.com"/>
Organization Name:	<input type="text" value="Store Locator"/>
Heading Text:	<input type="text" value="Hexasoft Sdn. Bhd."/>
Default Search Radius:	<input type="text" value="50"/> kilometers
Default Max Record:	<input type="text" value="10"/>
Measurement:	<input type="text" value="kilometers"/>

- Enter your organization email address.
- Enter your organization name.
- Heading Text will display at top of the client page (blank to disable).
- Select default search radius for end-user
 - System Define Radius – Allow system to fix a default search radius.
 - Invisible – Hide the option to search by radius.
 - No Search Radius – Uncheck by default the search by radius option.
- Select default maximum record for end-user
 - System Define Max Record – Allow system to fix a default max record.
 - Invisible – Hide the option to limit number of results.
 - No Max Record – Uncheck by default the option to limit number of results.
- Select default measurement (miles and kilometers) for end-user.

- Customize Search Fields

Customize Fields	
Store Header Text	<input type="text" value="Stores"/>
Distance Header Text	<input type="text" value="Distances"/>
ZIPCode:	<input checked="" type="checkbox"/>
Name:	<input checked="" type="checkbox"/>
Address1:	<input checked="" type="checkbox"/>
Address2:	<input checked="" type="checkbox"/>
City:	<input checked="" type="checkbox"/>
State:	<input checked="" type="checkbox"/>
Country:	<input checked="" type="checkbox"/>
Tel No:	<input checked="" type="checkbox"/>
Fax No:	<input checked="" type="checkbox"/>
Email Address:	<input checked="" type="checkbox"/>
Website URL:	<input checked="" type="checkbox"/>
Custom Field 1:	<input type="checkbox"/>
Custom Field 2:	<input type="checkbox"/>
Custom Field 3:	<input type="checkbox"/>
Custom Field 4:	<input type="checkbox"/>
Custom Field 5:	<input type="checkbox"/>

- Enter text to display in the header for the store column in the results.
- Enter text to display in the header for the distance column in the results.
- Enable or disable display of ZIP code in the results.
- Enable or disable display of the store name in the results.

- e. Enable or disable display of the address 1 in the results.
- f. Enable or disable display of the address 2 in the results.
- g. Enable or disable display of the city name in the results.
- h. Enable or disable display of the state name in the results.
- i. Enable or disable display of the country name in the results.
- j. Enable or disable display of the telephone number in the results.
- k. Enable or disable display of the fax number in the results.
- l. Enable or disable display of the email address in the results.
- m. Enable or disable display of the website URL in the results.
- n. Enable or disable display of the custom field 1 in the results.
- o. Enable or disable display of the custom field 2 in the results.
- p. Enable or disable display of the custom field 3 in the results.
- q. Enable or disable display of the custom field 4 in the results.
- r. Enable or disable display of the custom field 5 in the results.

***Note: If you enable custom field 1 to 5, the system will show a text box for custom field name.**

- Mapping Setting

Mapping Setting	
GoogleMap Base URL:	<input type="text" value="http://map.google.com/"/>
MapQuest Base URL:	<input type="text" value="http://www.mapquest.com/map"/>
Yahoo! Maps Base URL:	<input type="text" value="http://maps.yahoo.com/maps_"/>
Show Map Link In Result:	<input checked="" type="checkbox"/>
New Page:	<input checked="" type="checkbox"/>
Map Link Text:	<input type="text" value="Show Map"/>
Active Map Service:	<input type="button" value="Google Map"/>

- a. Enter the default Google map base URL.
- b. Enter the default MapQuest base URL.
- c. Enter the default Yahoo! map base URL.

*** Note: Please do not include "http://" in the map URL.**

- a. Checked "Show Map Link in Result" to enable map feature.
- b. Checked "New Page" if you wish to launch a new window when a user clicks the link for maps and directions.
- c. Enter Map Link Text you wish to display in the search results.
- d. Use "Active Map Service" to select the map service you wish to use.

- Miscellaneous Setting

Miscellaneous Settings	
Admin Max Record Per Page:	<input type="text" value="50"/>
Front-End Max Record Per Page:	<input type="text" value="50"/>
Odd Row Color:	<input type="text" value="F2FAFA"/>
Even Row Color:	<input type="text" value="F2FAFA"/>
Header Color:	<input type="text" value="C1DAD7"/>
Categories	<input checked="" type="checkbox"/>

- a. Enter the maximum number of records per page you wish to display in the Admin Control Panel area.
- b. Enter the maximum number of records per page you wish to display in the search page that is used by the clients.

- c. Define the background color (in hex) for the odd rows in the results.
- d. Define the background color (in hex) for the even rows in the results.
- e. Enable or disable categories feature.

When you are ready to save your changes, simply click the "Save" button at bottom of the page to save your settings to the configuration file.

6. Custom Keywords

The screenshot displays the 'Custom Keywords in Search' interface. It features two main sections: 'Basic Search' and 'Advance Search', both titled 'Store Locator'. The 'Basic Search' form includes fields for 'ZIP Code*', 'Search within' (with a dropdown for 'Miles'), 'Number record display' (with a dropdown for '10'), and 'Limit search to' (with checkboxes for 'Product 1', 'Product 2', and 'Product 3'). It also has a 'Go' button and an 'Advanced Search' link. The 'Advance Search' form includes fields for 'City', 'State', 'Number record display' (with a dropdown for '10'), and 'Limit search to' (with checkboxes for 'Product 1', 'Product 2', and 'Product 3'). It also has a 'Go' button and a 'Basic Search' link. Below these forms is a 'Sort By' dropdown set to 'Distance'. At the bottom, a table shows search results for 'Hexasoft Development Sdn. Bhd.' with columns for 'Store' and 'Distance'.

- Basic / Advanced Search Keywords

1. ZIP Code	ZIP Code
2. Search Within	Search within
3. Range of Distance	5 10 25 50 100 250
4. Miles	Miles
Kilometers	Kilometers
5. Number Records Display	Number record display
6. Range of Number of Records	5 10 25 50 100 250
7. Go Button	Go
8. Advanced Search Link	Advanced Search
9. City	City
10. State	State
11. Basic Search Link	Basic Search

1. Enter custom ZIP Code keyword.
2. Enter custom Search Within keyword.
3. Enter custom Range of Distance.
4. Enter custom Miles and Kilometers.
5. Enter custom Number Record Display.

6. Enter custom Range of Number of Record.
 7. Enter custom Go Button.
 8. Enter custom Advanced Search Link.
 9. Enter custom City.
 10. Enter custom State.
 11. Enter custom Basic Search Link.
- Sorting Keywords

12. Sort By	Sort By
13. Sort By Drop Down List	Distance
	Name
	Address
	City
	State
	Country

12. Enter custom Sort By keyword.
13. Enter custom Sort by Distance, Name, Address, City, State and Country keyword.

- Result Keywords

14. Web Site	Web Site
15. Email	Email
16. Tel Number	Tel No.
17. Fax Number	Fax No.

14. Enter custom Web Site keyword.
15. Enter custom Email keyword.
16. Enter Tel Number keyword.
17. Enter Fax Number keyword.

- Categories Keywords

18. Limit search to*	Limit search to
-----------------------------	-----------------

18. Enter Categories keyword.

- Custom Error Messages

Custom Error Messages	
1. Status Message if ZIP Code is Empty*	Status: ZIP code cannot be empty.
2. Status Message if Search Results is Empty*	Status: No store or dealer found.
3. Status Message if Missing Parameters in Advanced Search*	Status: Please fill in at least one search option.

When you are ready to save your changes, simply click the "Save All" button at the bottom of page to save your keywords to the configuration file.

* Note: All fields are required.

7. Store/Dealer Admin

The Store/Dealer Admin allows you to configure the stores information.

Search Store	Add New Store
<div>ZIP Code <input type="text"/></div> <div>Name <input type="text"/></div> <div>City <input type="text"/></div> <div>State <input type="text"/></div> <div>Country <input type="text"/></div> <div><input type="button" value="Search"/></div>	<div><input type="button" value="Add Store"/></div>

- Search Store

- Fill in search criteria and then click the "Search" button to get store information.
- After clicking the "Search" button, the result will be shown as below:

	Categories	ZIP Code	Name	Address	City	State	Country	Tel No	Fax No	Email	Custom 5	Preferred	Hidden	
<input type="button" value="Edit"/>	Product 1	65810	Rick		Springfield	MO	US					0	0	<input type="button" value="Delete"/>
<input type="button" value="Edit"/>	Product 2	32202	Future Print		Jacksonville	FL	US					0	0	<input type="button" value="Delete"/>
<input type="button" value="Edit"/>	Product 1	10016	Caspari Inc. Showroom	116 E 27th Street	New York	NY	US	(212) 685-9798		info@hgcaspari.com		0	0	<input type="button" value="Delete"/>
<input type="button" value="Edit"/>	Product 2	48105	Crown House Of Gifts	2623 Plymouth Rd	Ann Arbor	MI	US	(734) 761-2518				0	0	<input type="button" value="Delete"/>
<input type="button" value="Edit"/>	Product 3	22902	Caspari	100 W Main Street	Charlottesville	VA	US	(434) 293-0623		info@hgcaspari.com		0	0	<input type="button" value="Delete"/>
<input type="button" value="Edit"/>	Product 3	06810	Papyrus	7 Bardus Ave	Danbury		US	203.744.6445				0	0	<input type="button" value="Delete"/>
<input type="button" value="Edit"/>	Product 2	06032	Papyrus	353 South Rd	Farmington		US	(860) 561-2880				0	0	<input type="button" value="Delete"/>
<input type="button" value="Edit"/>	Product 1	06074	Papyrus	201 Evergreen Way # 261	South Windsor	CT	US	(860) 644-8973				0	0	<input type="button" value="Delete"/>
<input type="button" value="Edit"/>	Product 1	06901	Papyrus	100 Greyrock Pl	Stamford	CT	US	(203) 975-0046				0	0	<input type="button" value="Delete"/>
<input type="button" value="Edit"/>	Product 2	06880	Papyrus	178 Main St	Westport	CT	US	(203) 227-8889				0	0	<input type="button" value="Delete"/>
<input type="button" value="Edit"/>	Product 1	62568	1 Stop Communications	1528 Springfield Rd PO Box 110	Taylorville	IL	US	(217) 824-3635				0	0	<input type="button" value="Delete"/>
<input type="button" value="Edit"/>	Product 2	14009	21st Century Electronics	662 West Main St Rte 39 PO Box 267	Arcade	NY	US	(716) 492-0012				0	0	<input type="button" value="Delete"/>
<input type="button" value="Edit"/>	Product3	13896	Aboo Electronics	Box 55 3 Grove St	Falls	NH	US	(603) 569-2090				0	0	<input type="button" value="Delete"/>
<input type="button" value="Edit"/>	Product1	21001	Aberdeen-Beards Hill Plz	Beards Hill Plaza 939 Beards Hill Rd Ste C	Aberdeen	MD	US	(410) 273-7333				0	0	<input type="button" value="Delete"/>

- Add Store

- Click Add Store button.
- Fill in the required fields with your desired text and click the "Save" button to save the store information to your database.

Store Information	
Categories	<input type="text"/>
ZIP Code*	<input type="text"/>
Name*	<input type="text"/>
Address1	<input type="text"/>
Address2	<input type="text"/>
City	<input type="text"/>
State	<input type="text"/>
Country	UNITED STATES <input type="button" value="v"/>
Tel No	<input type="text"/>
Fax No	<input type="text"/>
Email Address	<input type="text"/>
Web Site	<input type="text"/>
Custom 1	<input type="text"/>
Custom 2	<input type="text"/>
Custom 3	<input type="text"/>
Custom 4	<input type="text"/>
Custom 5	<input type="text"/>
Preferred	<input type="checkbox"/>
Hidden	<input type="checkbox"/>
<input type="button" value="Save"/>	

* Note 1: ZIP Code and Name are required fields.

** Note 2: All Preferred Stores will be highlighted and listed before others.

- Edit Store

- Fill in the search condition to find the store you wish to edit and then click on the "Search" button to get the store information.
- Click on the "Edit" button to change the store information.
- Just modify any store information that needs changing and then click on the "Save" button to update the information to the database.

Store Information	
Categories	Product 1
ZIP Code*	10016
Name*	Caspari Inc. Showroom
Address1	116 E 27th Street
Address2	
City	New York
State	NY
Country	UNITED STATES ▼
Tel No	(212) 685-9798
Fax No	
Email Address	info@hgcaspari.com
Web Site	http://www.hgcaspari.com
Custom 1	11th floor
Custom 2	
Custom 3	
Custom 4	
Custom 5	
Preferred	<input type="checkbox"/>
Hidden	<input type="checkbox"/>
Save	

- Delete Store

- Fill in the search condition to find the store you wish to delete and then click on the "Search" button to get store information.
- Click on the "Delete" button to remove the store information from the database.

* **Note:** Deleting a record from the database can not be undone.

Tip: An alternative to deleting records from the database permanently would be to flag a record as a Hidden record, so it will no longer be displayed in your results page. This way, you could "unhide" the record at any time. You can flag a record as being hidden, by editing the record and placing a check-mark inside the "Hidden" option.

8. Import Stores

- a. If you have an existing database of records/locations you wish to import into ZIPCodeWorld™ .NET Store Locator V2, it can be done via the Import Stores tool.
- b. Click on the “Browse” button to get your file path.
- c. Select either overwrite or append new records.
- d. Click on the “Import” button to process.

The screenshot shows a web interface titled "Import Store Data". It features a "File:" label followed by a text input field and a "Browse..." button. Below this, there are two radio button options: "Overwrite (Delete records in my existing database and create a new database from my import file.)" which is selected, and "Append (Add my import file to my existing database)". At the bottom of the form is a blue "Import" button. Below the form, there are two lines of small text: "* It is extremely important that your import file follows the guidelines of our Import File Format. The format is a 'TAB' separated TXT file." and "* The format of TAB separated text file is ZIPCode, Name, Address1, Address2, City, State, Country, Tel No, Fax No, Email, Web Site, Custom1, Custom 2, Custom3, Custom 4, Custom 5, Hidden and Preferal".

- Format for Import File

- a. To import a file of locations to your system, you must have a standard text file that has Comma Separated Values (CSV). The file must also contain all the required fields necessary for importing to the database. The import file can contain more than one store record, but they must be one per line.
- b. The easiest way to create your import file is to export your current database to a comma delimited file.
- c. Each record must contain the following fields (even if it is blank).

*** Note: The CSV file must contain all 19 fields.**

Column	Max Size	Required	Sample Data
Categories:	200 Characters	No	Product 1
Location Name:	100 Characters	Yes	ZIPCodeWorld.com
Address 1:	255 Characters	No	1901 60th PL
Address 2:	255 Characters	No	Suite 1020
City:	100 Characters	No	Bradenton
State:	100 Characters	No	FL
Country:	100 Characters	No	US
Zip Code:	7 Characters	Yes	34203
Telephone:	15 Characters	No	(604) 12345789
Fax:	15 Characters	No	(604) 12345790
Email:	100 Characters	No	sales@zipcodeworld.com
Website:	255 Characters	No	http://www.zipcodeworld.com
Custom Field 1:	255 Characters	No	Any text
Custom Field 2:	255 Characters	No	Any text
Custom Field 3:	255 Characters	No	Any text
Custom Field 4:	255 Characters	No	Any text
Custom Field 5:	255 Characters	No	Any text
Hidden:	1 Number	Yes	0=Display, 1=Hide
Preferred:	1 Number	Yes	0=No, 1=Yes

9. Import ZIPCodeWorld Database

- If you want to update your new ZIPCodeWorld Database , it can be done via the Import ZIPCodeWorld tool.
- Click on the “Browse” button to get your file path.
- Click on the “Upload” button to process.

Database Upload

File:

Warning !:

Upload new zip code database file will overwrite your existing database.

This action can not be undone!

It is extremely important that your import file follows the guidelines of our Upload File Format. The format is a ',' separated text file (ends with .csv).

See our Online User Manual for more information about Upload File formats.

Please use caution with this step.

Once again, clicking the button below will **Upload** button your existing zip code table, with the values in your upload file.

*Note: Upload a new zip code database file will overwrite your existing database. This action can not be undone!

**Note: This tool is only usable if the target database is either a MS SQL or My SQL database. For importing files of Access (.MDB) type please replace ZIPCOWORLD-PREMIUM.MDB file in your database folder.

***Note: If you encounter any internal server error during upload. Please add `<httpRuntime executionTimeout="120" maxRequestLength="30720" />` into your main *Web.Config* file in the `<system.web>` section.

- Format for Import File

- To import a file of zip code data to your locator system, you must have a standard text file that contains Comma Separated Values (CSV). The file must also contain all the required fields necessary for importing to your database. The import file can contain more than one zip code record, but they must be one per line.
- The easiest way to get your database is through www.zipcodeworld.com download the latest ZIPCodeWorld database.

* Note: The CSV file must contain all 3 fields.

Column	Max Size	Required	Sample Data
ZIP_CODE	7 Characters	Yes	00501
LATITUDE	Double	Yes	40.815180
LONGITUDE	Double	Yes	-73.045500

10. User Control

User Maintenance																							
Login ID	<input type="text"/>																						
Password	<input type="password"/>																						
Is Active	YES <input type="button" value="v"/>																						
<input type="button" value="Add User"/>																							
<table border="1"><thead><tr><th></th><th>Login ID</th><th>Is Active</th><th></th><th></th></tr></thead><tbody><tr><td>Change Password</td><td>admin</td><td>Yes</td><td></td><td></td></tr><tr><td>Change Password</td><td>mjc</td><td>Yes</td><td><input type="button" value="Disable"/></td><td><input type="button" value="Delete"/></td></tr><tr><td colspan="5">1</td></tr></tbody></table>					Login ID	Is Active			Change Password	admin	Yes			Change Password	mjc	Yes	<input type="button" value="Disable"/>	<input type="button" value="Delete"/>	1				
	Login ID	Is Active																					
Change Password	admin	Yes																					
Change Password	mjc	Yes	<input type="button" value="Disable"/>	<input type="button" value="Delete"/>																			
1																							

If you wish to edit your administrative login information, such as change your username or password, you can click the “User Control” link to bring up the user maintenance screen.

- Add User
 - a. Enter Login ID and Password.
 - b. Click on the “Add User” button to add user information to the database.

* Note: Login ID and Password are required fields.

- Change Password
 - a. Click on the “Change Password” link.
 - b. The system will open a new page for you to enter the new password.
 - c. Enter new password and enter again in the second field to confirm.
 - d. Click on the “Change Password” button to save new password to the database

* Note: For security reason, please enter a password with at least 6 characters. If possible, please use combination of numbers, lower case and upper case alphabets as your password. You are advised to change the default admin password.

- Enable/Disable User
 - a. This feature allows you to enable or disable login for a user.
 - b. If the user is enabled, a “Disable” button will show.
 - c. If the user is disabled, an “Enable” button will show.

* Note: The user will not be able to login, if the “Is Active” status is “No”

** Note: You are not allowed to disable “admin” (default user).

- Delete User
 - a. This feature allows you to delete a user permanently.
 - b. Click on the “Delete” button to remove a user from the database.

* Note: Deleting a record from the database can not be undone.

** Note: You are not allowed to delete “admin” (default user).

Client Control Panel

1. Basic Search

Store Locator

ZIP Code*

☒ **Search within**

10

▼

Miles

☒ **Number record display**

10

▼

Limit search to

☐ Product1

☐ Product2

☐ Product3

Go

[Advanced Search](#)

- a. Enter the ZIP Code you wish to query.
- b. Select the search radius.
- c. Select max number of records to display (if enable).
- d. Select categories to further filter the results.
- a. Click on the “Go” button to get search results.

2. Advanced Search

Store Locator

City

State

☒ **Number record display**

10

▼

Limit search to

☐ Product1

☐ Product2

☐ Product3

Go

[Basic Search](#)

- a. Enter the name of the City and State you wish to query.
- b. Select maximum number of records to display.
- c. Select categories to further filter the results.
- a. Click on the “Go” button to get search results.

3. Basic Search Result

Sort By:

Distance

▼

Stores	Distances
Holbrook-Sun-Vet Sun-Vet Mall - 5601 Sunrise Hwy Holbrook NY 11741 US Tel No: (631) 699-0905	3.13 kilometers Show Map
East Patchogue-Montauk 751 Montauk Hwy Patchogue NY 11772 US Tel No: (631) 654-8733	13.37 kilometers Show Map
Commack-Veteran Hwy 40 Veteran Hwy Commack NY 11725 US Tel No: (631) 499-8932	10.08 kilometers Show Map
Ctr Monticue Sq S/C	

Client Control Panel (HTML)

If you want to customize the interface, copy the source code below and insert into your application.

Remove <!-- --> tag if you want to search within range or search by number of record.

```
<!DOCTYPE HTML PUBLIC "-//W3C//DTD HTML 4.0 Transitional//EN">
<html>
  <head>
    <title>Store Locator Client</title>
  </head>
  <body>
    <form action="storelocatorclient.aspx" method="post">
      <input type="hidden" name="uid" value="1" />
      ZIP Code <input type="text" name="zip"><br>
      <!-- Remove this if you want search within range
      Search within
      <select name="range">
        <option>5</option>
        <option>10</option>
        <option>25</option>
        <option>50</option>
        <option>100</option>
        <option>250</option>
      </select>
      <br>
      -->
      <!-- Remove this if you want search by number of
record
      Number records display
      <select name="record">
        <option>10</option>
        <option>25</option>
        <option>50</option>
        <option>100</option>
        <option>250</option>
      </select>
      <br>
      -->
      <input type="submit" value="Go">
    </form>
  </body>
</html>
```

PURCHASE LICENSE

License Agreement

A license is required for each machine that the product is installed on, including development or staging machines. Please refer to the end of this document for the complete license agreement.

Purchase Instruction

Proceed to our order page. Fill out the online form and choose the correct number of licenses. Once your order has been approved, you will receive your license file (License.Key) immediately through email. Save the license file to any folder in your web application to register the component and remove the limitations that are in the unregistered version. Just remember to modify the *Web.Config* file that is in the *StoreLocator2.0* folder so that the license key path is set correctly.

Please visit <http://www.zipcodeworld.com> for online registration 24 x 7.

UPGRADE

Upgrade Latitude and Longitude Database

The ZIPCodeWorld™ .NET Store Locator V2 Control depends on an internal database to calculate the distance by using the latitude and longitude of each zip code. All users with active license will be allowed to download the monthly updates from the ZIPCodeWorld™ download area during their subscription period.

To update, users need to drop or replace the database with the latest one from the download area. The ZIPCodeWorld™ .NET Store Locator V2 Control will use the latest database once the local copy has been updated. Please refer to the welcome email for more information regarding downloading updates and account information.

ZIPCODEWORLD™ .NET STORE LOCATOR V2 LICENSE AGREEMENT

IMPORTANT-READ CAREFULLY:

This License Agreement is a legal agreement between you (either an individual or a single entity) and Hexasoft Development Sdn. Bhd., owner of IP2Location™ trademark, ("HEXASOFT" or "we") for the HEXASOFT developed ZIPCodeWorld™ .NET Store Locator V2 (hereafter referred to as the SOFTWARE PRODUCT) accompanying this License Agreement, which includes web service routines and data result(s). By exercising your rights to make and use copies of the SOFTWARE PRODUCT, you agree to be bound by the terms of this License Agreement. If you do not agree to the terms of this License Agreement, you may not use the SOFTWARE PRODUCT.

GRANT OF LICENSE.

This License Agreement grants the following rights: You are granted the right to use the SOFTWARE PRODUCT files on one computer in the Internet or Local Area Network ("LAN"). You may not use the SOFTWARE PRODUCT files on multiple computers without matching number of licenses.

DESCRIPTION OF LIMITATIONS.

You may not reverse engineer except and only to the extent that such activity is expressly permitted by applicable law notwithstanding this limitation. Without prejudice to any other rights, HEXASOFT may terminate this License Agreement if you fail to comply with the terms and conditions of this License Agreement. In such event, you must destroy all copies of the SOFTWARE PRODUCT and all of its parts.

COPYRIGHT.

All title and copyrights in and to the SOFTWARE PRODUCT and any copies of the SOFTWARE PRODUCT are owned by HEXASOFT. The SOFTWARE PRODUCT is protected by copyright laws and international treaty provisions.

NO WARRANTIES.

HEXASOFT expressly disclaims any warranty for the SOFTWARE PRODUCT. The SOFTWARE PRODUCT and any related documentation is provided "as is" without warranty of any kind, either express or implied, including, without limitation, the implied warranties of merchantability or fitness for a particular purpose. The entire risk arising out of use or performance of the SOFTWARE PRODUCT remains with you.

LIMITATION OF LIABILITY.

HEXASOFT's entire liability and your exclusive remedy under this Agreement shall not exceed fifteen dollars (US \$15.00).

NO LIABILITY FOR CONSEQUENTIAL DAMAGES.

In no event shall HEXASOFT nor anyone else who has been involved in the creation, production, or delivery of the SOFTWARE PRODUCT be liable for any damages whatsoever (including, without limitation, damages for loss of business profits, business interruption, loss of business information, or any other pecuniary loss) arising out of the use of or inability to use this HEXASOFT product, even if HEXASOFT has been advised of the possibility of such damages. Because some states and jurisdictions do not allow the exclusion or limitation of liability for consequential or incidental damages, the above limitation may not apply to you.

MISCELLANEOUS

"ZIPCodeWorld" is a trademark of Hexasoft Development Sdn. Bhd..

"Microsoft" is a registered trademark of Microsoft Corporation.

"Windows" is a registered trademark of Microsoft Corporation.

All other trademarks are the property of their respective owners.