

USB 2x Speed Floppy Disk Drive

with “Memory Stick” Slot

Setup Guide

Read before connecting the drive

Before you can use the drive for the first time, you must perform the procedures in this guide to install the driver software.



MEMORY STICK™

MSFD-20U

© 2002 Sony Corporation

Printed in China

When using Windows XP

1 Turn on your computer. Windows starts.

CAUTION

Be sure to log on as a user with “Administrator” access privileges.

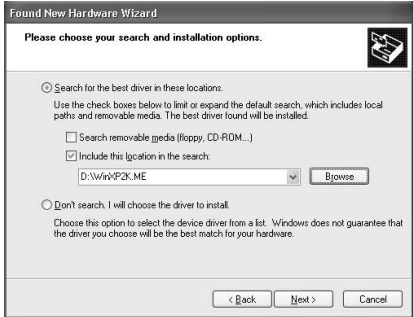
2 Insert the supplied CD-ROM into the CD-ROM drive of your computer.

3 Connect this drive to the USB connector of your computer.

4 The “Found New Hardware Wizard” dialog box appears. Select “Install from a list or specific location (Advanced)”.



5 Click [Next], select “Search for the best driver in these locations”, and then select the “Include this location in the search” check box in the screen that appears. Click [Browse] and select the “WinXP2K.ME” folder on the supplied CD-ROM.



Note

If the other check box is selected, clear it before proceeding.

6 Click [Next]. Follow the instructions on the screen to complete the installation.

Once the installation is complete, the computer detects the drive.

Note

If a dialog box prompting you to restart your computer appears, restart your computer.

7 Double-click [My Computer] and confirm that a new floppy disk and “Memory Stick” icon are present.

Note

The drive letters assigned depend on your computer. (In the example, “A” and “E”.)



3 1/2 Floppy (A:)



Sony MemoryStick (E:)

When using Windows Me

1 Turn on your computer. Windows starts.

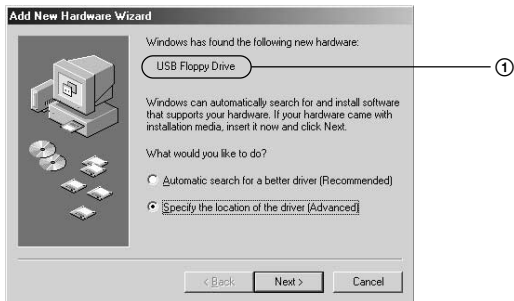
2 Insert the supplied CD-ROM into the CD-ROM drive of your computer.

3 Connect this drive to the USB connector of your computer.

4 The “Add New Hardware Wizard” dialog box appears. Select “Specify the location of the driver (Advanced)”.

Note

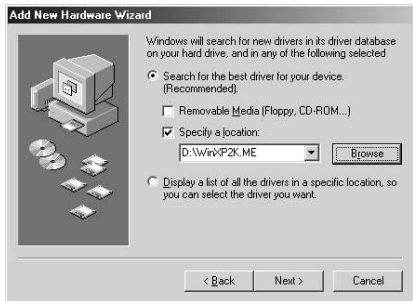
In the dialog box below, the new hardware appears as “USB Floppy Drive” (①). Depending on your computer, the new hardware may appear as “MPF-MSRW1”. This does not affect the setup procedure of the drive.



5 Click [Next], select “Search for the best driver for your device. (Recommended)”, and then select the “Specify a location” check box in the screen that appears. Click [Browse] and select the “WinXP2K.ME” folder on the supplied CD-ROM.

Note

If the other check box is selected, clear it before proceeding.



6 Click [Next]. Follow the instructions on the screen to complete the installation.

Once the installation is complete, the computer detects the drive.

Notes

- Before your computer detects the drive, messages such as “New Hardware Found” appear and close automatically. These messages may appear several times. Wait until messages no longer appear before proceeding to the next step.
- If a dialog box prompting you to restart your computer appears, restart your computer.

7 Double-click [My Computer] and confirm that a new floppy disk and removable disk icon are present.

Note

The drive letters assigned depend on your computer. (In the example, “A” and “E”.)



3 1/2 Floppy (A:)



Removable Disk (E:)

• • • • The “Memory Stick” reader/writer appears as “Removable Disk”.

When using Windows 2000

1 Turn on your computer. Windows starts.

CAUTION

Be sure to log on as a user with “Administrator” access privileges.

2 Insert the supplied CD-ROM into the CD-ROM drive of your computer.

3 Connect this drive to the USB connector of your computer. The “Found New Hardware Wizard” dialog box appears.



4 Click [Next], and then select “Search for a suitable driver for my device (recommended)” in the screen that appears.

Note

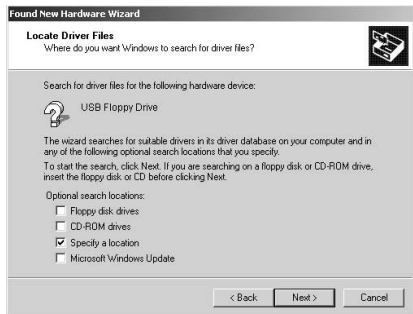
In the dialog box below, the new hardware appears as “USB Floppy Drive” (①). Depending on your computer, the new hardware may appear as “MPF-MSRW1”. This does not affect the setup procedure of the drive.



5 Click [Next], and then select the “Specify a location” check box in the screen that appears.

Note

If other check boxes are selected, clear them before proceeding.



6 Click [Next], click [Browse], and then select the “WinXP2K.ME” folder on the supplied CD-ROM in the screen that appears.



7 Click [OK]. Follow the instructions on the screen to complete the installation. Once the installation is complete, the computer detects the drive.

Note

If a dialog box prompting you to restart your computer appears, restart your computer.

8 Double-click [My Computer] and confirm that a new floppy disk and removable disk icon are present.

Note

The drive letters assigned depend on your computer. (In the example, “A” and “E”.)



3 1/2 Floppy (A:)



Removable Disk (E:)

• • • • The “Memory Stick” reader/writer appears as “Removable Disk”.

When using Windows 98 Second Edition

1 Turn on your computer. Windows starts.

2 Insert the supplied CD-ROM into the CD-ROM drive of your computer.

3 Connect this drive to the USB connector of your computer. The “Add New Hardware Wizard” dialog box appears.

Notes

- In the dialog box below, the new hardware appears as “USB Floppy Drive” (①). Depending on your computer, the new hardware may appear as “MPF-MSRW1” or “Generic USB Hub”.
- If the new hardware appears as “MPF-MSRW1”, proceed to step 4 and continue the setup procedure.
- If the new hardware appears as “Generic USB Hub”, follow the instructions on the screen to install the Windows 98 Second Edition Generic USB Hub driver software. Once the installation is complete, the following dialog box appears. Insert the supplied CD-ROM into the CD-ROM drive of your computer and proceed to step 4.



4 Click [Next], and then select “Search for the best driver for your device. (Recommended)” in the screen that appears.



5 Click [Next], and then select the “Specify a location” check box in the screen that appears. Click [Browse] and select the “Win98” folder on the supplied CD-ROM.

Note

If other check boxes are selected, clear them before proceeding.



6 Click [Next]. Follow the instructions on the screen to complete the installation.

Once the installation is complete, the computer detects the drive.

Notes

- Before your computer detects the drive, messages such as “New Hardware Found” appear and close automatically. These messages may appear several times. Wait until messages no longer appear before proceeding to the next step.
- If a dialog box prompting you to restart your computer appears, restart your computer.

7 Double-click [My Computer] and confirm that a new floppy disk and removable disk icon are present.

Note

The drive letters assigned depend on your computer. (In the example, “A” and “E”.)



3 1/2 Floppy (A:)



Removable Disk (E:)

• • • • The “Memory Stick” reader/writer appears as “Removable Disk”.