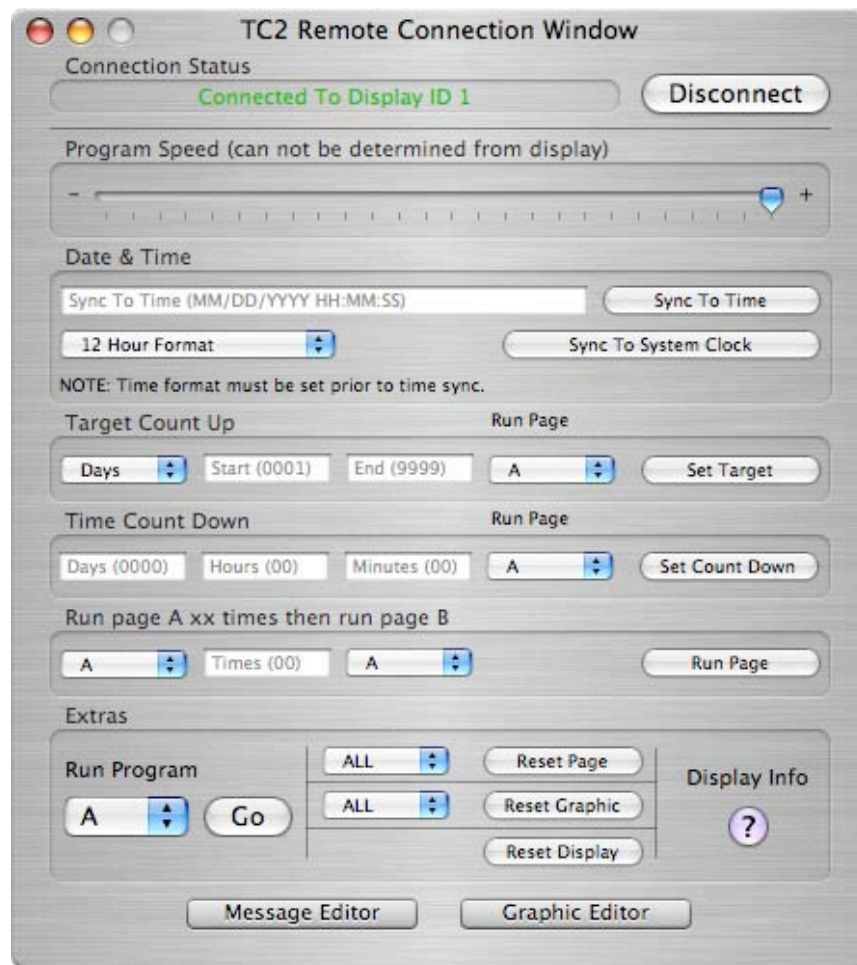


# TC2 Remote



## **TC2 Remote is Donationware.**

If you find TC2 Remote useful and would like to see more development on this project please donate towards future development.

Donate to development at:  
[www.Ampersand-Interactive.com](http://www.Ampersand-Interactive.com)



## Welcome to TC2 Remote

TC2 Remote is a utility to control Pro-Lite TrueColorII Digital LCD displays.

### Requirements

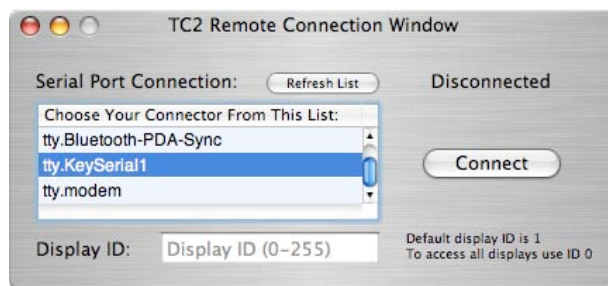
Pro-Lite TrueColorII digital LCD display.

USB Serial Port connector.

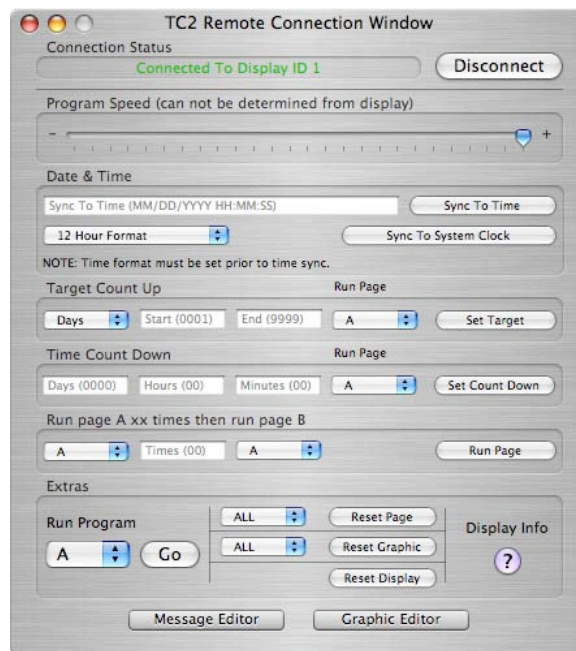
Mac OS 10.4 or greater.

### Instructions

When you first launch TC2 Remote you will see the serial connection window. Select your serial port adapter, enter your display ID. If you only have one display you can enter 0, which will control all displays on a network of displays. Lastly press connect.



You will now be connected to your display and have full control of its features via the window below.





When in the TC2 Remote Connection Window you will have quick access to many of the display's advanced settings and controls.

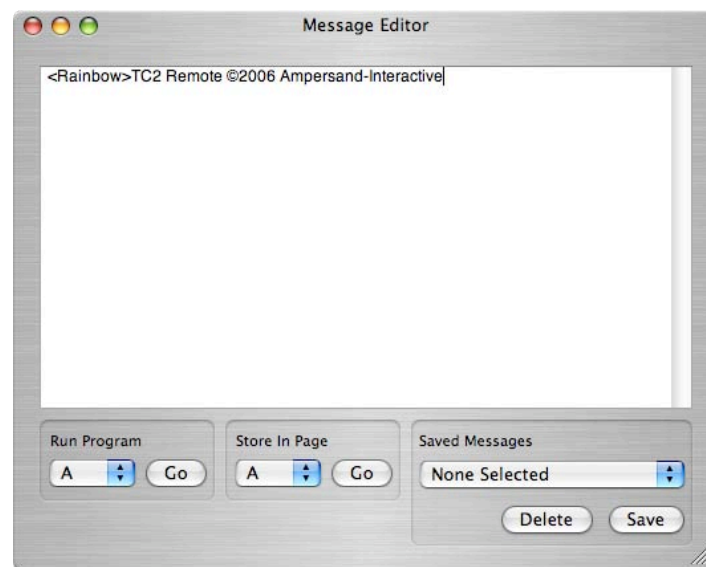
#### Remote Connection Window Features:

- *Program Speed Slider,*  
*adjust the speed of the running programs by the slide of a mouse.*
- *Date & Time,*  
*set the display's clock to any time you like or sync to your system clock with one quick click.*
- *Target Count Up,*  
*count up to running a program.*
- *Time Count Down,*  
*count down to running a program.*
- *Run a program x number of times then run new program.*
- *Run any programs*
- *Reset programs or all programs in the display.*
- *Reset graphics or all graphics in the display.*
- *Reset the display.*
- *Display the display information on the display.*

## Message Editor

Use the message editor to quickly create display messages. Save messages on your computer for quick transfer to your display.

Create a message in the display editor the save the message on your computer. Select a page on your display and store that message directly into your display. Messages stored in the display can not be retrieved. Select any program and run it directly from the message editor.

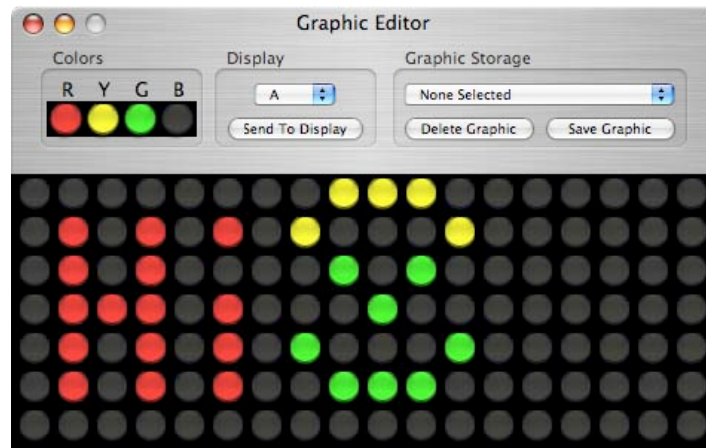




## Graphic Editor

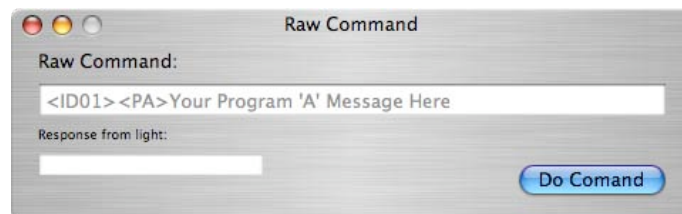
Use the graphic editor to quickly create display graphics. Save graphics on your computer for quick transfer to your display. NOTE: to store a created graphic on your display you will clear that graphic from your display. Use the reset tool for the graphics on the Remote Connection Window to restore default graphics.

Create a graphic in the graphic editor the save the graphic on your computer. Select a page on your display and store that graphic directly into your display. Graphics stored in the display cannot be retrieved. Graphics will be stored in letter pages, however from the Graphics menu they will be stored over the default graphics. For example if you store in graphic page A, you will need to use the “Telephone” to see your image. To view your image you will need to run a program message that includes a graphic that your image is stored in.



## Raw Command Editor

Use the raw command editor tool to send raw commands to your display. This is not recommended unless you know how to properly communicate with your display.





**TC2 REMOTE ©2006 AMPERSAND-INTERACTIVE**

**TC2 REMOTE IS PROVIDED "AS IS," USE AT YOUR OWN RISK. THE AUTHORS ACCEPT NO LIABILITY FOR ANY MISINFORMATION OR DAMAGES CAUSED BY USE OF TC2 REMOTE.**

**TC2 REMOTE AND AMPERSAND-INTERACTIVE ARE NOT AFFILIATED WITH PRO-LITE INC. ANY REFERENCES, IMAGES, OR LIKENESS TO PRO-LITE INC. OR ANY OF THEIR PRODUCTS ARE PROPERTY OF THEIR RESPECTIVE OWNERS.**

**IN NO EVENT SHALL AMPERSAND-INTERACTIVE AND OR ANY AUTHOR OF THIS APPLICATION BE LIABLE FOR ANY SPECIAL, INDIRECT, INCIDENTAL OR CONSEQUENTIAL DAMAGES (INCLUDING, BUT NOT LIMITED TO, PROCUREMENT OF SUBSTITUTE GOODS OR SERVICES; LOSS OF USE, LOSS OR HARM OF HUMAN LIFE, DATA, PROFITS, OR BUSINESS INTERRUPTION) ARISING IN ANY WAY OUT OF THE USE, REPRODUCTION, MODIFICATION AND/OR DISTRIBUTION OF THIS SOFTWARE, HOWEVER CAUSED AND WHETHER UNDER THEORY OF CONTRACT, TORT (INCLUDING NEGLIGENCE), STRICT LIABILITY OR OTHERWISE, EVEN IF AMPERSAND-INTERACTIVE HAS BEEN ADVISED OF THE POSSIBILITY OF SUCH DAMAGE.**

**PLEASE CONTACT AMPERSAND-INTERACTIVE BEFORE DISTRIBUTING THIS SOFTWARE IN ANY WAY.**

**[WWW.AMPERSAND-INTERACTIVE.COM](http://WWW.AMPERSAND-INTERACTIVE.COM)**