

iSnapshot

iSnapshot is an efficient and easy screenshot tool, synthesizing the functions of snapshot management, notes feature and exporting etc., allowing users to make various kinds of software instruction and tutorial quickly...

It has four kinds of screenshot, including...

- Full screen mode: simply only with custom shortcut , all the content on full screen will be kept
- Window mode: user can do the screenshot simply by moving the cursor to the target window and then one left-click.
- Custom selection mode: user can move the cursor to select the target area, and zoom-in to capture more precisely during the dragging
- Delay mode: user can customize the delay setting and the software will do the screenshot automatically. Under this mode, users can capture the menu based on the user operation

It provide abundant custom choices for user-friendly concern, e.g. custom screenshot shortcut, delay setting, capture window shade, capture the current cursor. Worthy to mention, it allows for smooth copy and paste amongst different applications.

Making tutorial is one complicated issue, which requires large amounts of snapshot resources in advance. In order to better manage the resources, there comes software management. It allows for all the past snapshots with easy access to find, browse, delete and batch export etc. The function of quick preview allows users to check the actual export effect, not only saving the trouble of exporting but also increase the browsing efficiency tremendously

It supports various picture formats for exporting/batch exporting, including but not limited to JPEG2000, PNG, GIF, BMP, TIFF etc

Snapshot notes feature, allowing users to add notes to the snapshots so as for better understanding, including main functions as below (need to purchase this grant)

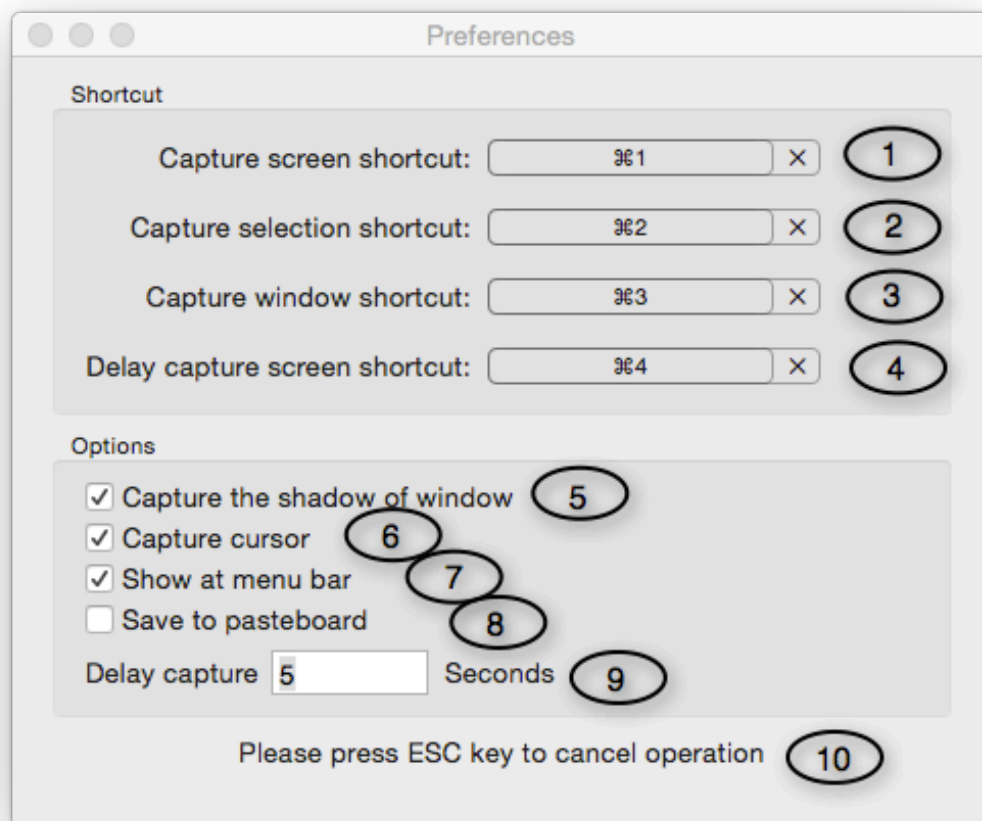
- Support text tool, add/edit/delete etc.
- Support cutout tool, custom all sorts of cutout formats
- Support shape tool, adding various shapes including square and oval etc., and supports self-drawing/custom shape
- Support notes tool, different colors for different purposes
- Support line tool, set all line types, including dashed line, solid line, dotted line, dotted dashed lines etc.

- Support arrow tool, set various arrow types
- Support snapshot filter function, combining brightness and contrast adjustment, dozens effect including Temperature and Tint
- Support undo and redo
- Support multi-picture alignment


iSnapshot is an efficient and easy screenshot tool. If you have any question or suggestion, please kindly email to seasoft.service@hotmail.com. We are dedicated to provide best services

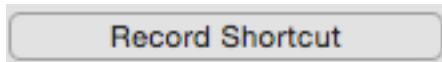
Preferences set interface

When starting the software, the preferences interface will be open automatically as below

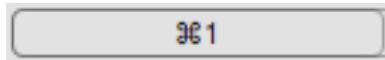


Shortcut set-up

You can custom the capture screen shortcut in 1, the default is command+1. If you want to re-set, you only need to click  to delete the default and then click



to reset the shortcut. Either you can simply click



to reset/re-input the new shortcut. You can use ESC to stop. Note 2 is capture selection shortcut, the default is command+2; Note 3 is capture window shortcut, the default is command+3; Note 4 is delay capture screen shortcut, the default is command+4

Choices set-up

Note 5, if to capture the window shade only effective under window mode. Check means yes, vice versa. The default is yes.

Note 6, if to capture current cursor only effective under full screen/delay full screen mode. Check means yes, vice versa. The default is yes.

Note 7, if to show operation menu on the menu bar

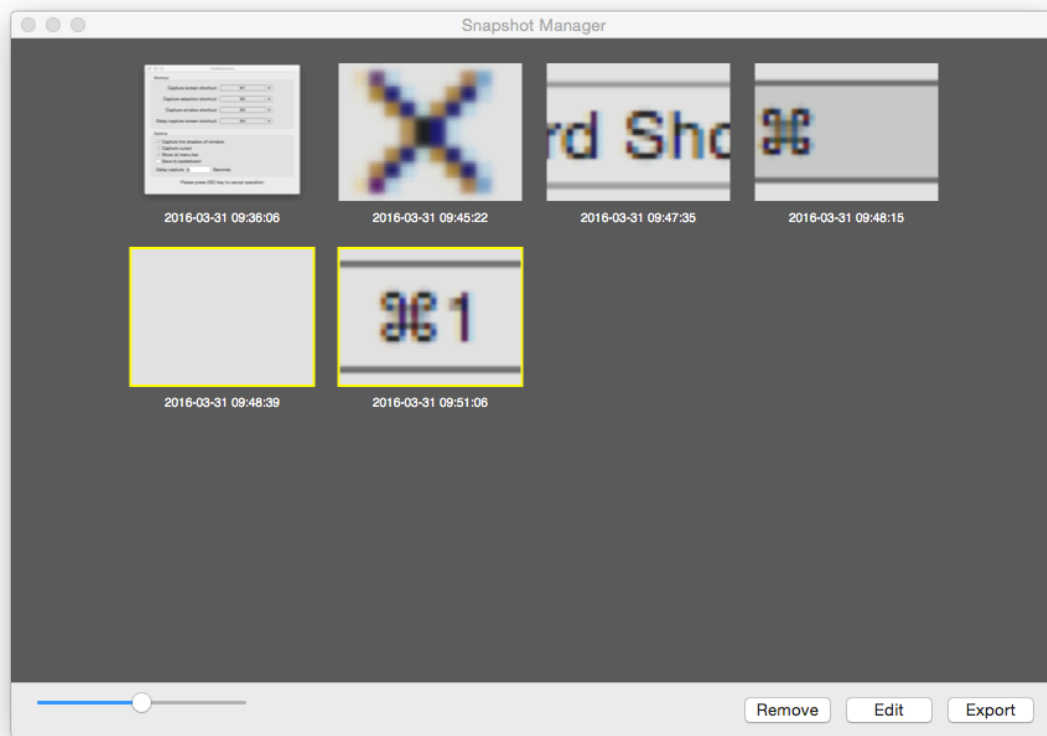
Note 8, if to store data in the system clipboard

Note 9, set up the delay timer with the unit of second. The default is 3 seconds.

Note 10, press ESC to stop/cancel during the operation

Management interface

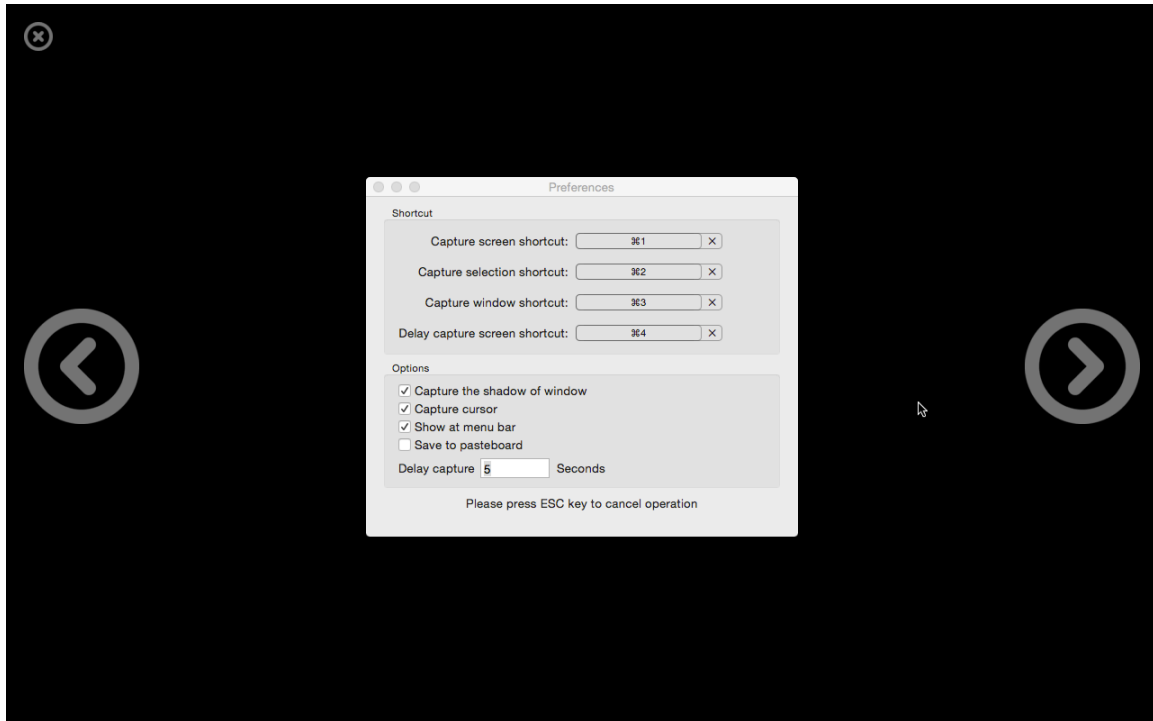
When the software starts, user can operate by shortcut or via menu bar. When managing the snapshots, you can press Command+G or you can follow the route as Window->Snapshot Manager, as below



The lower-left slider is for zoom-in/out thumbnails; the lower-right buttons are for, remove selections, edit selections and exporting selections.

The browsing area can be multiplied via selection, command + left mouse click, Shift + left mouse click. Dragging thumbnails out of the window to delete snapshots.

Double click the thumbnails (or press Space) to enter quick preview interface as below.



The quick preview interface is of full screen mode. You can click the exit button or Press ESC to exit preview. The left arrow is for previous snapshot and the right arrow is for next snapshot. When the cursor stops, three buttons will fade out automatically. Use mouse wheel to zoom in/out.

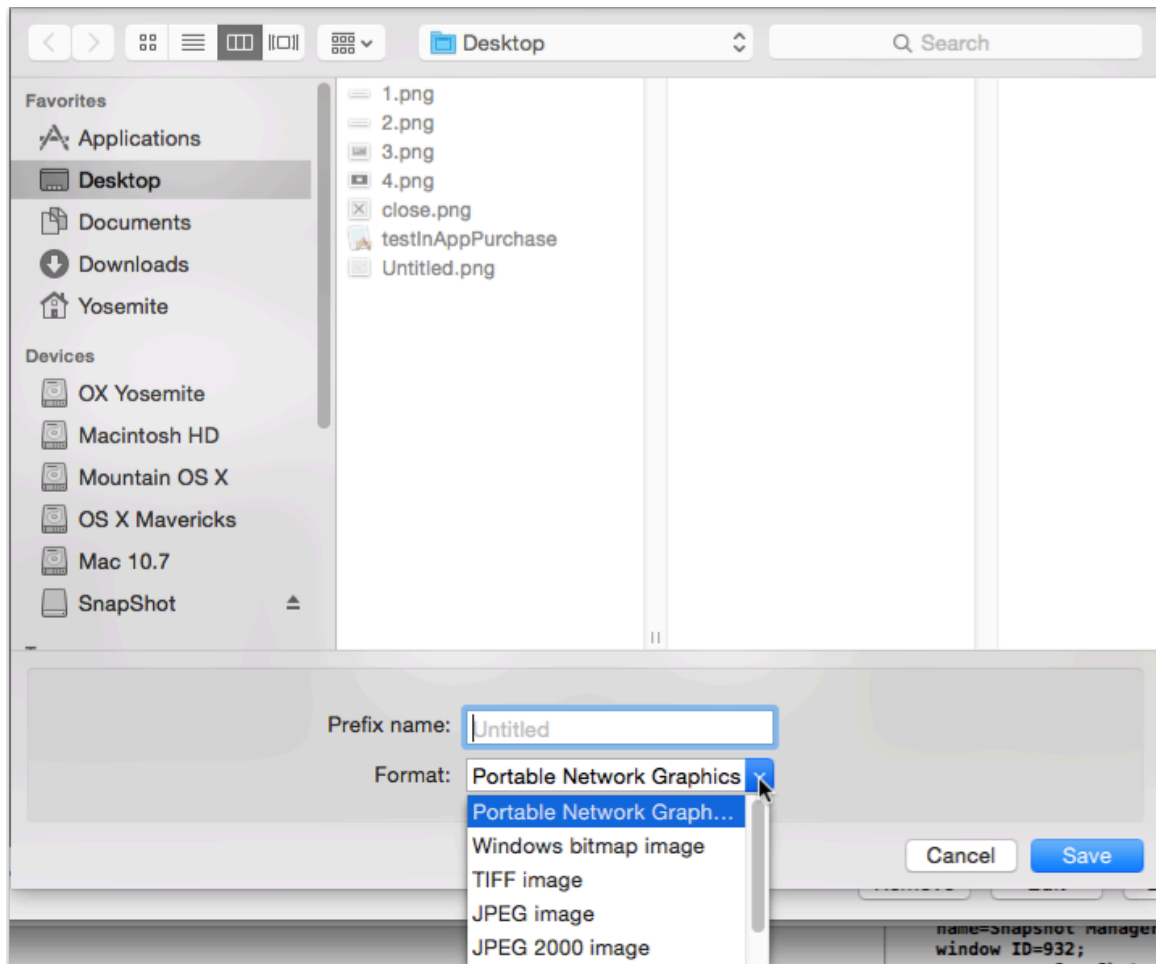
Export interface

Click Export to enter the interface as below

Prefix name is served to name the file. The default is “Untitled”; if more than one snapshots, it will be named after prefix number.

Format is to set up the export file format, supporting PNG, BMP, TIFF, GIF, JPEF, JPEF2000 etc.

When finishing the set up, click SAVE to export operation.

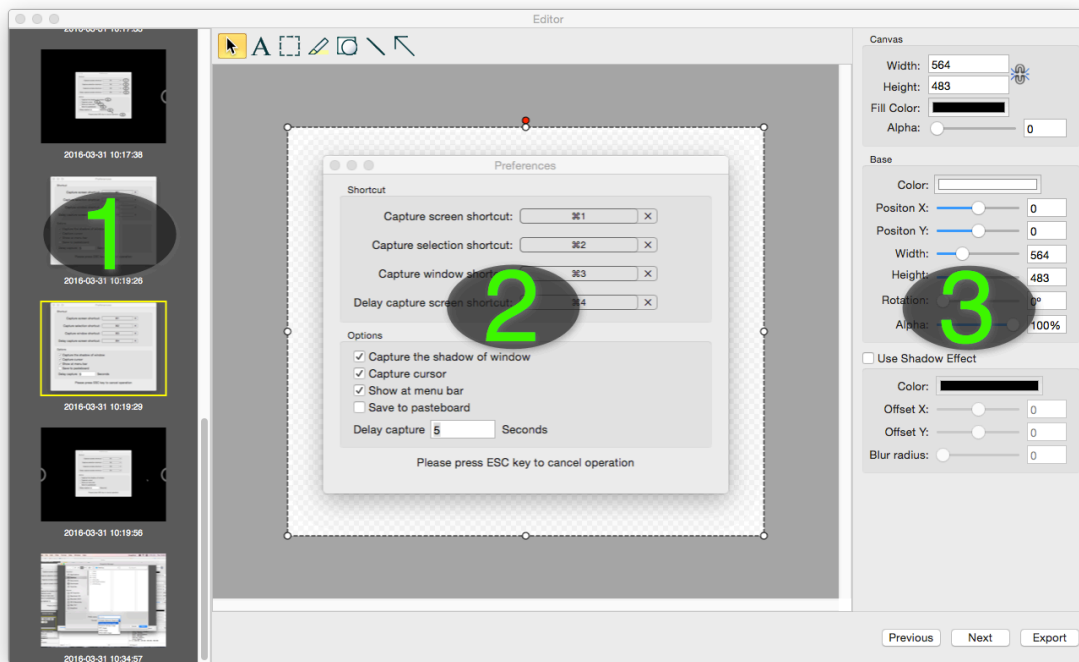


Note interface

When the software starts, press Command+E to enter the interface or follow the route of Windows->Editor as below


Note 1 refers to the list area. You can drag the edge to change the area, meanwhile you can follow the route of view->show/hide snapshot to show or hide

Note 2 refers to note area with the upper tool selection area, view->zoom in, view->zoom out, view->fit to window, view->actual size represent zoom in, zoom out, fit to window and actual size



How to use note tools:

- Click the object tool  to choose the picture object

- Click the text tool : to create text as below pictures.



represent font

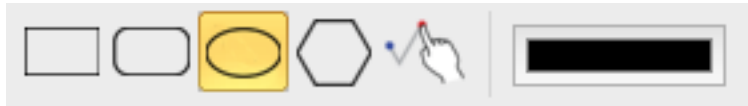
type, font size and color setting.

- Cutout tool  use cursor to create cutout area as below




refers to shape setting, including square, rounded rectangles, oval, polygons and custom shape

- Note tool  to add color remark to selected area as below




refers to shape setting
and color setting

- Shape tool : allows users to create various shapes, as below




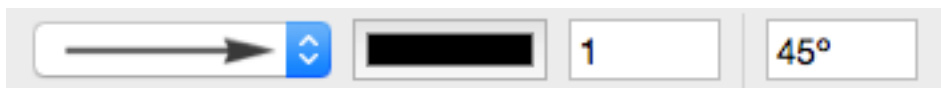
refer to shape set, line types, color and line thickness

- Line tool : to create line, you can press Shift while moving the cursor so to keep the line horizontal or vertical; click the left mouse button to start and click again to end. As the picture



represent line types,
color and line thickness

- Arrow tool : to create arrow, while press Shift to maintain it horizontally or vertically. Click the left mouse button to start and click again to end. As the picture



refer to
arrow type, color, thickness and angle;

How to create shape:

- **Create square:** Click the left mouse button, drag and re-click to create. Same applies for rounded rectangles and oval
- **Create polygons:** click the left mouse button to draw the vertex and double click the last vertex
- **Create custom shape:** press the left mouse button and drag to draw and then release the left mouse button. You can press ESC to cancel.

Note 3 in the note interface refers the general set-up of object

Canvas is the size of canvas and color setting

Base refers to color, position, size, rotation, opacity

Shadow refers to the shadow setting of selected object

The filter is effective only in note interface.

Filter... means you can adjust the filter index.

When the cursor moves to menu, it will show the instructions accordingly

Edit menu provides the operation of withdraw/redo, copy, paste and alignment etc.