

Appendix B

Manual Driver Installation

This Appendix describes how to install your NETGEAR 10/100/1000 Mbps Gigabit Ethernet Adapter GA311 driver without using the setup.exe but rather manually through the Windows utilities.



Note: The procedures below will only install the GA311 driver. If you also want the GA311 utility, run the launch.exe program in the GA311 directory on the *NETGEAR 10/100/1000 Mbps Gigabit Ethernet Adapter GA311 Resource CD*.

Basic Installation Instructions

Use the procedure below that corresponds to the version of Windows you are using:

- Windows Vista
- Windows XP
- Windows 2000, Windows 98SE 2nd edition, Windows Me
- Windows NT 4.0

For Windows Vista and XP Users Installing a GA311

1

Install the GA311 Gigabit Ethernet Adapter.

- a. Locate an available PCI slot in your computer.
- b. Insert the card into the PCI expansion slot.

Note: To avoid damaging any components on the card, handle it by the edges, using your thumbs to push it securely into the PCI slot. Do not use excessive force, but make sure the card is fully inserted into the slot to prevent the PC operating system from freezing at startup.

- c. When you boot up the Windows Vista/XP system after installing the GA311 Gigabit Ethernet Adapter, a Found New Hardware Wizard dialog box displays. Click Next.

Note: Click **Continue Anyway** if you are prompted with a Windows Vista/XP Logo testing message.

- d. Insert the GA311 driver CD into your CD-ROM drive.
- e. Select Install from a list or specific location (Advanced) and then click Next. The choose your search and installation options dialog box appears.



Found New Hardware Wizard

2

Install the driver for the NETGEAR 10/100/1000 Mbps Gigabit Ethernet Adapter GA311.

- a. Click Search for the best driver in these locations, clear the Search removable media (floppy, CD-ROM...) check box and select Include this location in the search. Type D:\ in the drop-down box. Click Next.

Note: Windows XP drivers are found at D:\ assuming that D:\ is the drive letter for the CD-ROM drive).

- b. The driver is copied onto your system, and XP will probably ask for the original Windows XP CD-ROM. Point Windows XP to the proper location (for example, D:\i386)
- c. The Completing the Found New Hardware Wizard dialog box appears with the following adaptor name: GA311 Gigabit Ethernet Adapter. Click Finish.
- d. Remove the GA311 driver CD from the CD-ROM drive. The GA311 Windows XP driver installation is complete.

You should see the Local Area Connection icon on the right in the lower right portion of the Windows task bar.



Search and Installation Options



Local Area Connection Icon before you connect a network cable

3

Verify connectivity to your network.

- a. Connect one end of the cable to the GA311 Gigabit Ethernet Adapter.
- b. Connect the other end of the cable to an RJ-45 Ethernet network port.
- c. Turn on power to the PC and then to the connected device.
- d. Verify that one of the four LEDs is on, indicating that there is a good link to the card. Alternatively, install the GA311System Utility to easily view the connection status without needing to view the end of the adapter.
- e. Verify connectivity to the Internet or network resources.



Local Area Connection icon

- Click the Local Area Connection icon in the lower right section of the Windows Taskbar.
- Click the NETGEAR GA311 Gigabit Adapter. A message appears describing the status of the device.

If there is a problem with the installation of the driver, an exclamation point will appear next to the NETGEAR GA311 Gigabit Adapter. Try rebooting your computer.

Note: If you are unable to connect, see troubleshooting tips in [“Basic Troubleshooting Tips”](#) on page 3-4.

For Windows 2000 & 98SE/Me Users Installing a GA311

You must have Network Administrator privileges to install the driver software. The following screens illustrate the Windows 2000 installation steps. The Windows 98SE and Windows Me installation process may proceed with different dialog boxes, or the dialog boxes may open in a different sequence, but should prompt you for the same information.

1

Install the GA311 Gigabit Ethernet Adapter.

- a. Locate an available PCI slot in your computer.
- b. Insert the card into the PCI expansion slot.

Note: To avoid damaging any components on the card, handle it by the edges, using your thumbs to push it securely into the PCI slot. Do not use excessive force, but make sure the card is fully inserted into the slot to prevent the PC operating system from freezing at startup.

- c. When you boot up the Windows system after installing the GA311 Gigabit Ethernet Adapter, a Found New Hardware Wizard dialog box appears, indicating that Windows has found the adapter. Click Next.
- d. Insert the GA311 driver CD into your CD-ROM drive.
- e. The install hardware device drivers dialog box appears. Select Search for a suitable driver for your device (Recommended). Click Next.



Found New Hardware Wizard



Search for a driver

2

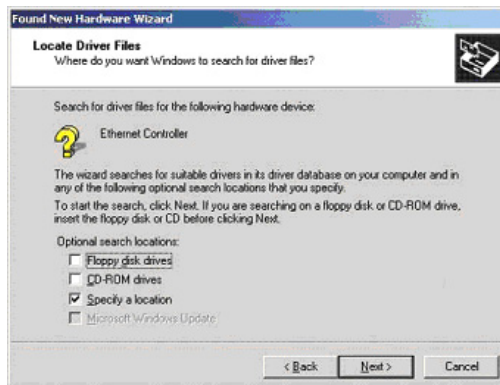
Install the driver for the NETGEAR 10/100/1000 Mbps Gigabit Ethernet Adapter GA311.

- a. The Locate Driver Files dialog box appears.
- b. Select Specify a location. Click Next.
- c. Insert the GA311 driver CD into your CD-ROM drive. In the Copy manufacturers files from field, type D:\ and click OK.

Note: Windows drivers are found at D:\, assuming that D: is the drive letter for the CD-ROM drive.

- d. The Driver File Search Results dialog box appears. Click Next.
- e. The Completing the Found New Hardware Wizard dialog box appears with the following adapter name: NETGEAR 10/100/1000 Mbps Gigabit Ethernet Adapter GA311. Click Finish.
- f. Remove the GA311 driver CD from the CD-ROM drive. The GA311 Windows driver installation is complete.

You should see the Local Area Connection icon on the right in the lower right portion of the Windows task bar.



Locate Driver Files

Note: If Windows warns about a Digital Signature Not Found, click **Yes** to continue.



Local Area Connection Icon before you connect a network cable

3

Verify connectivity to your network.

- a. Connect one end of the cable to the GA311 Gigabit Ethernet Adapter.
- b. Connect the other end of the cable to an RJ-45 Ethernet network port.
- c. Turn on power to the PC and then to the connected device.
- d. Verify that one of the four LEDs is on, indicating that there is a good link to the card. Alternatively, install the GA311System Utility to easily view the connection status without needing to view the end of the adapter.
- e. Verify connectivity to the Internet or network resources.



Local Area Connection icon

- Click the Local Area Connection icon in the lower right section of the Windows taskbar.
- Click the NETGEAR GA311 Gigabit Ethernet Adapter. A message appears describing the status of the device.

If there is a problem with the installation of the driver, an exclamation point will appear next to the NETGEAR GA311 Gigabit Ethernet Adapter. Try rebooting your computer.

Note: If you are unable to connect, see [“Basic Troubleshooting Tips” on page 3-4.](#)

For Windows NT 4.0 Users Installing a GA311

This section provides information about inserting the gigabit Ethernet adapter in your computer and installing the Microsoft Windows NT 4.0 driver software.

1

Install the GA311 Gigabit Ethernet Adapter.

- a. Locate an available PCI slot in your computer.
- b. Insert the card into the PCI expansion slot.

Note: To avoid damaging any components on the card, handle it by the edges, using your thumbs to push it securely into the PCI slot. Do not use excessive force, but make sure the card is fully inserted into the slot to prevent the PC operating system from freezing at startup.

- c. When you boot up the Windows system after installing the GA311 Gigabit Ethernet Adapter, on the Windows taskbar, click the Start button, point to Settings, and then click Control Panel. The Control Panel window opens, displaying a group of icons including the Network icon. Double-click on the network icon.
- d. The network dialog box opens, which displays a list of installed components. Click on the adapter tab, and then click the Add button.



Network Settings

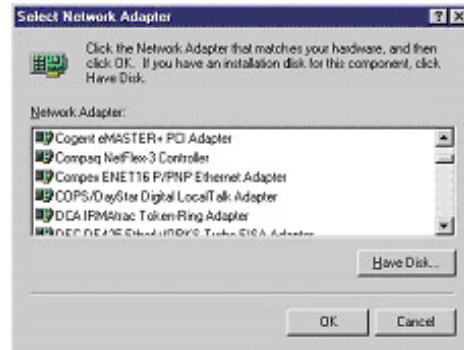
2

Install the driver for the NETGEAR 10/100/1000 Mbps Gigabit Ethernet Adapter GA311.

- a. The select network adapter dialog box opens, click the Have Disk button.
- b. The insert dialog box opens, insert the GA311 driver CD into your CD-ROM drive. Type D:\ in the dialog box and click OK.

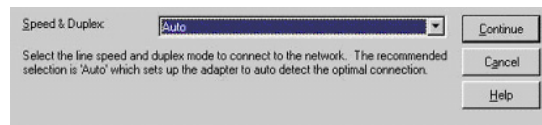
Note: Windows NT 4.0 drivers are found at D:\, assuming that D: is the drive letter for the CD-ROM drive.

- c. The select OEM Option dialog box opens, highlight the GA311 Gigabit Ethernet Adapter and click OK.
- d. The driver is copied onto your system, and NT 4.0 will probably ask for the original Windows NT 4.0 CD-ROM. Point Windows NT 4.0 to the proper location (for example, D:\i386). When the Adapter property dialog box opens, click Continue to accept the default parameters.
- e. If other cards in your system use TCP/IP bindings, the Microsoft TCP/IP properties dialog box will open. Set any necessary TCP/IP configurations and click Close.
- f. When prompted to restart your computer, remove your driver CD from the CDROM drive and click OK.
- g. The GA311 Windows NT 4.0 driver installation is complete.



Select Network Adapter

Note: If Windows warns about a Digital Signature Not Found, click **Yes** to continue.



Accept the Default Speed & Duplex

3

Verify connectivity to your network.

- a. Connect one end of the cable to the GA311 Gigabit Ethernet Adapter.
- b. Connect the other end of the cable to an RJ-45 Ethernet network port.
- c. Turn on power to the PC and then to the connected device.
- d. Verify that one of the four LEDs is on, indicating that there is a good link to the card.
- e. Verify connectivity to the Internet or network resources:
 - Double-click My Computer on the desktop, double-click Control Panel, and then double-click System.
 - Click Hardware and click Device Manager tab, and then double-click Network adapters.
 - Double-click NETGEAR GA311 Gigabit Ethernet Adapter. A message appears describing the status of the device.

If there is a problem with the installation of the driver, an exclamation point will appear next to the NETGEAR GA311 Gigabit Ethernet Adapter. Try rebooting your computer.