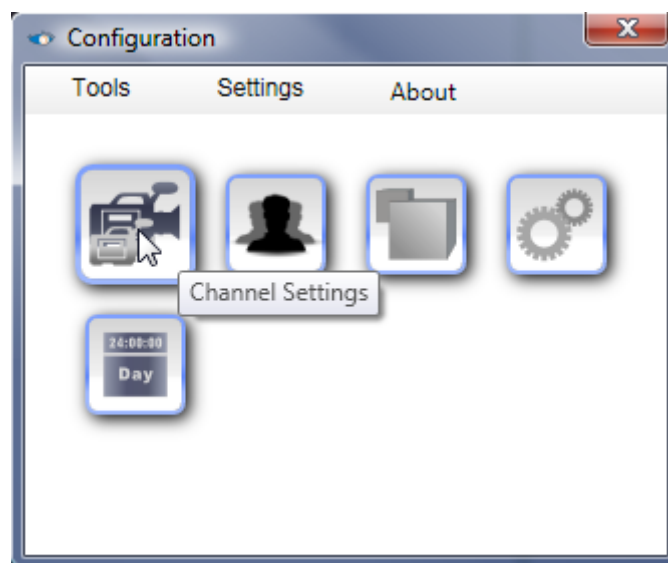


# 1. Abandon Object Detector

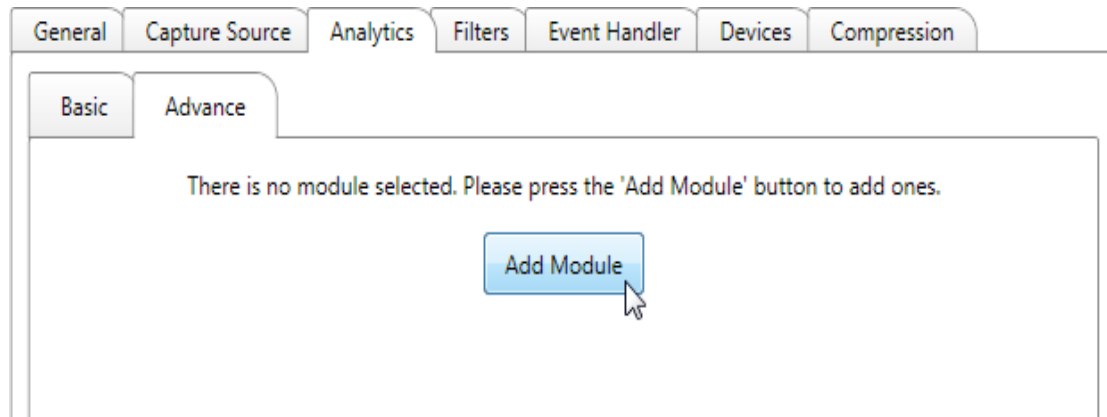
This module provides an alarm when abandon object is detected in an area.



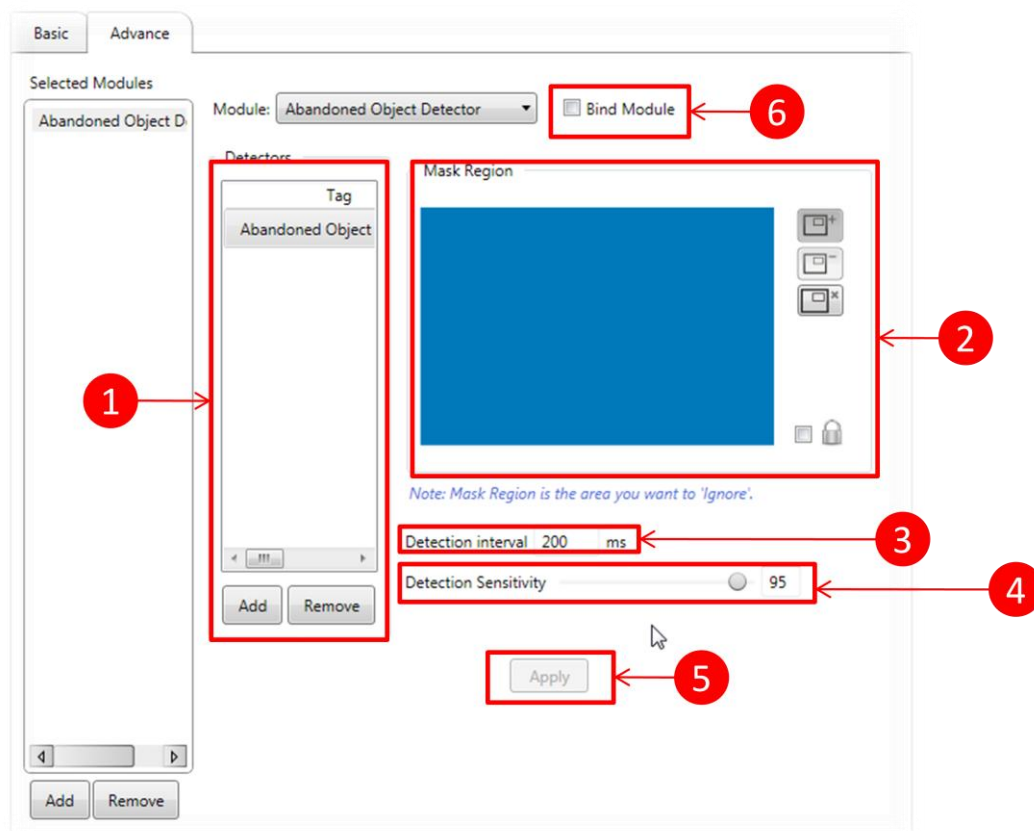
To add the module, open the “Setting Dialog” and select “Channel Settings”:



Select the “Analytics” – “Advance” tab, and press the “Add Module” button



Choose the “Abandoned Object Detector” module, you should see the dialog as follow:



- 1) **Detectors**—here you can add/remove detector. There is no limit on the number of detectors within one channel. Each detector shall correspond to different settings respectively.
- 2) **Mask region**—allow user to mask the region that want to ignore.

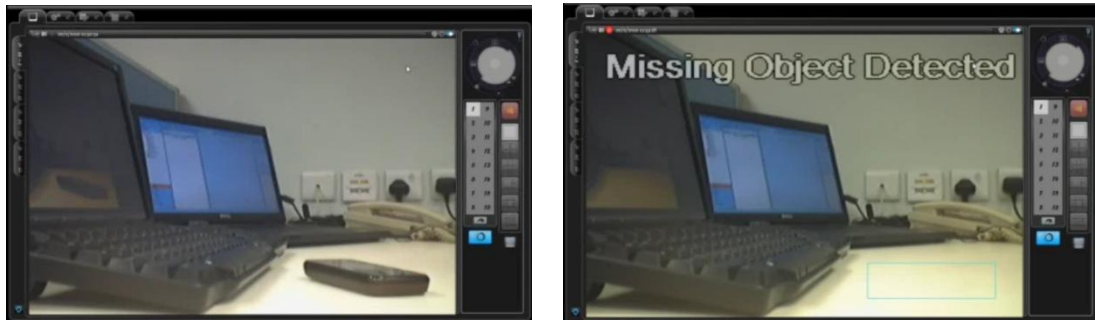
- 3) **Detection interval**— the interval between any 2 frames the tracker to process. Lower value would produce positive effect on accuracy but consumes more computation time.
- 4) **Detection Sensitivity**— to set the sensitivity to video content changes. Please note that this value should be properly set according to your environment. A high value does NOT mean to produce better result. Please refer to the following table:

Sensitivity	Reaction	Alarm Trigger Threshold
5	Slow	15 ~ 20 min
50	Medium	6 ~ 8 min
95	Fast	3 ~ 5 min

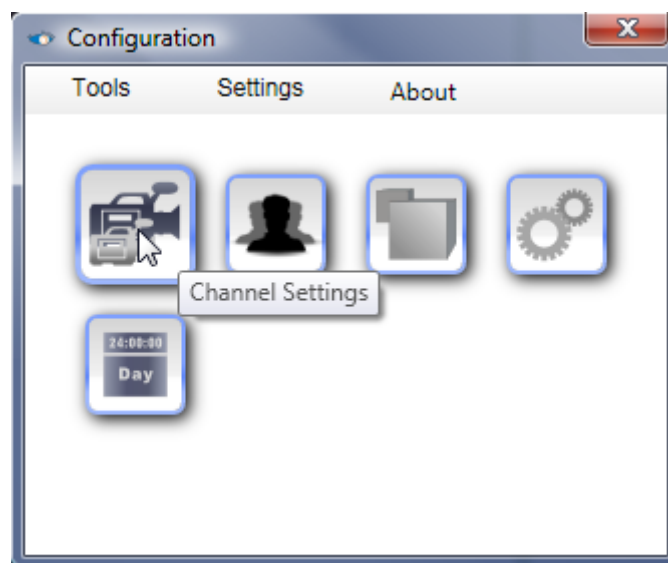
- 5) **"Apply" button** – confirm changes by clicking this button.
- 6) **"Bind Module " checkbox**—to deploy the module on the channel.

## 2. Missing Object Detector

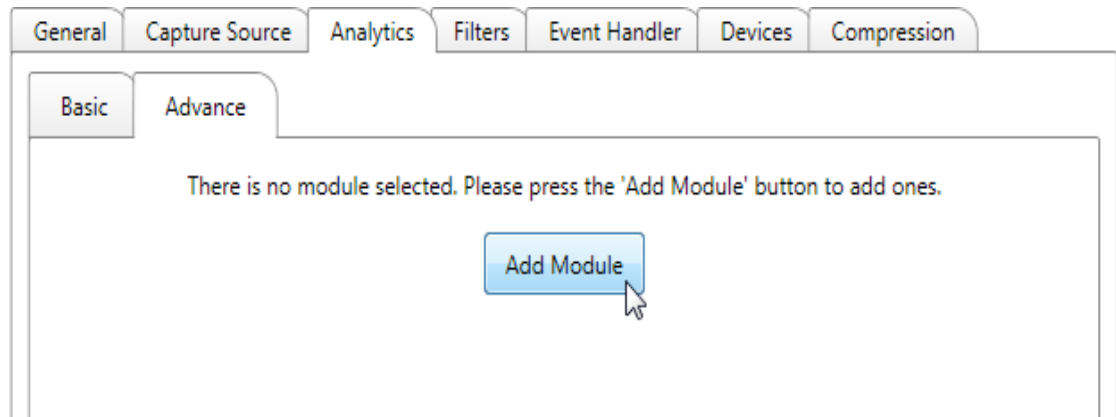
This module provides an alarm when missing object(s) is detected in a selected area(s).



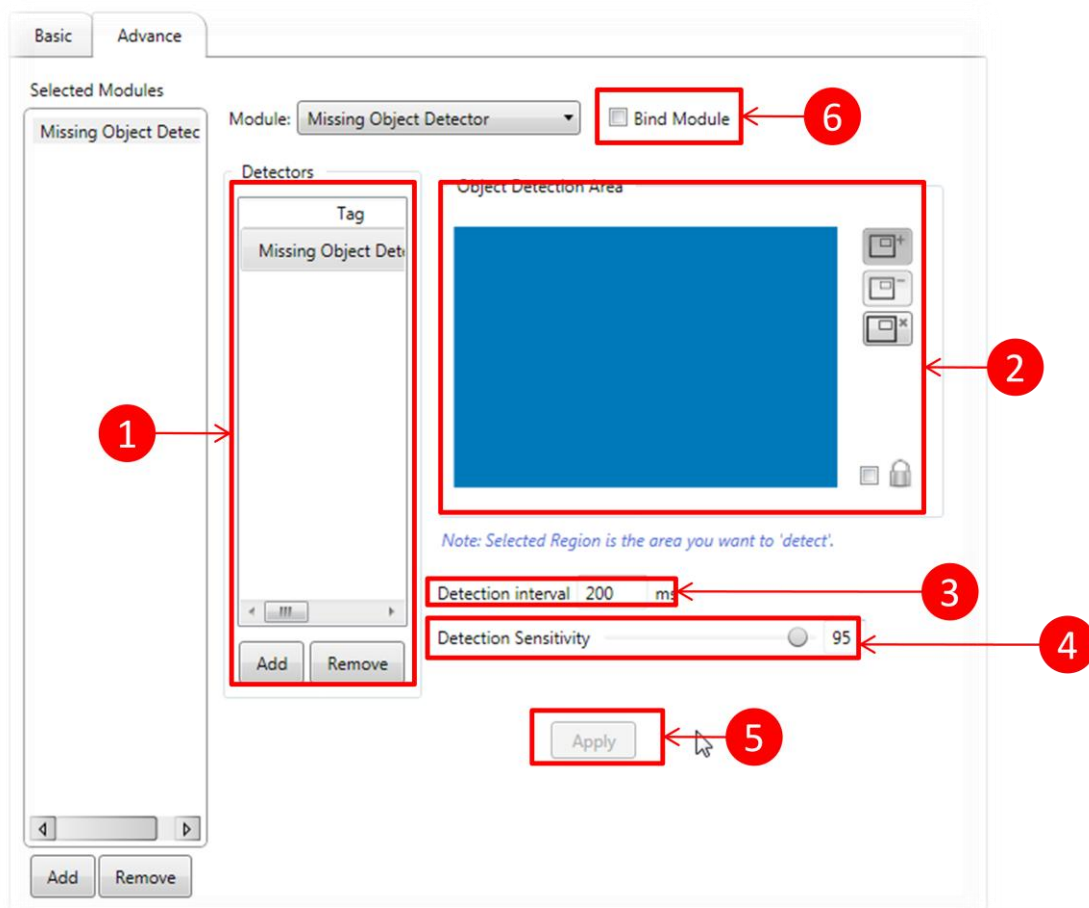
To add the module, open the “Setting Dialog” and select “Channel Settings”:



Select the “Analytics” – “Advance” tab, and press the “Add Module” button



Choose the “Missing Object Detector” module, you should see the dialog as follow:



- 1) **Detectors**—here you can add/remove detector. There is no limit on the number of detectors within one channel. Each detector shall correspond to different

settings respectively.

- 2) **Mask region**—allow user to select the region that want to “DETECT”.
- 3) **Detection interval**— the interval between any 2 frames the tracker to process. Lower value would produce positive effect on accuracy but consumes more computation time.
- 4) **Detection Sensitivity**— to set the sensitivity to video content changes. Please note that this value should be properly set according to your environment. A high value does NOT mean to produce better result. Please refer to the following table:

Sensitivity	Reaction	Alarm Trigger Threshold
5	Slow	15 ~ 20 min
50	Medium	6 ~ 8 min
95	Fast	3 ~ 5 min

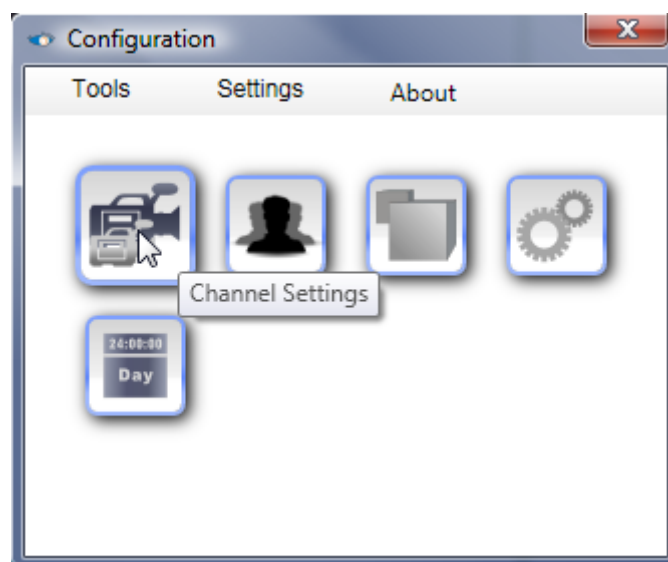
- 5) **“Apply” button** – confirm changes by clicking this button.
- 6) **“Bind Module “ checkbox**—to deploy the module on the channel.

### 3. Camera Lost Focus Detector

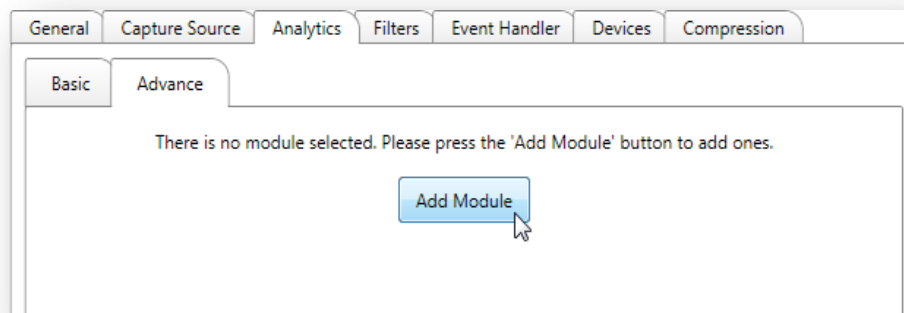
This module provides alarm when the camera lost its focus.



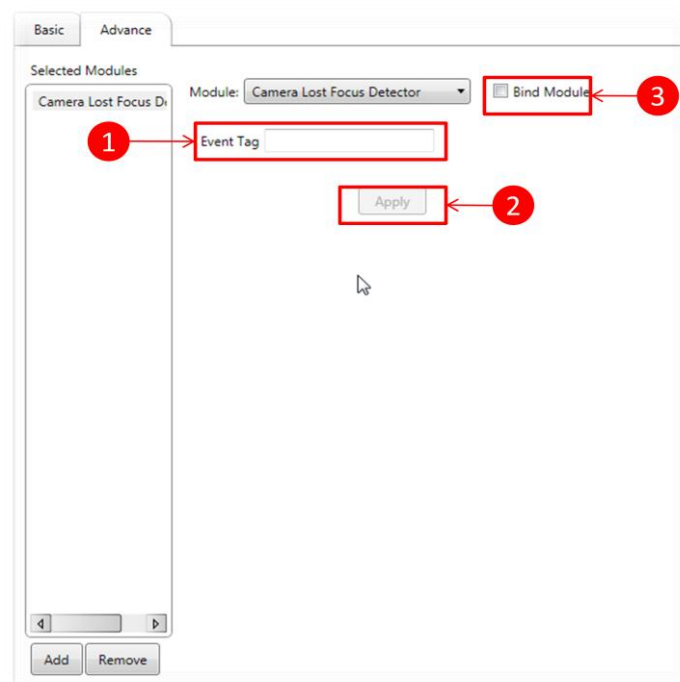
To add the module, open the “Setting Dialog” and select “Channel Settings”:



Select the “Analytics” – “Advance” tab, and press the “Add Module” button



Choose the “Camera Lost Focus Detector” module, you should see the dialog as follow:

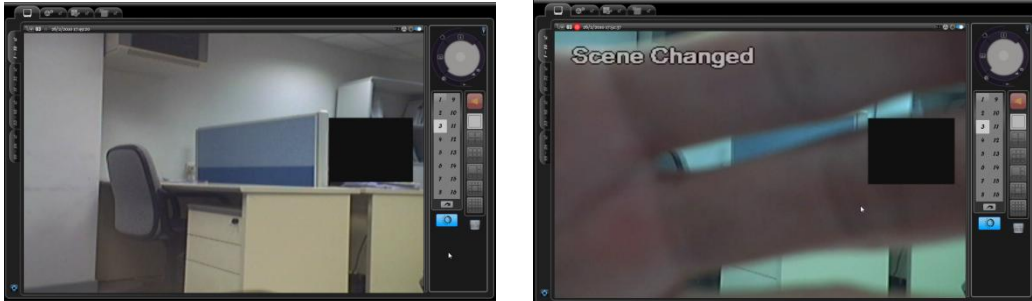


- 1) **Event Tag**— here user can define the tag of the event.
- 2) **“Apply” button** – confirm changes by clicking this button.
- 3) **“Bind Module” checkbox**—to deploy the module on the channel.

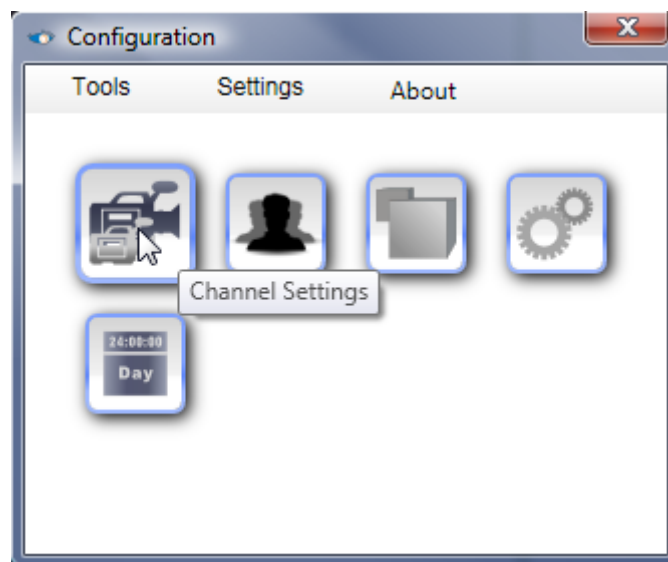


## 4. Scene Change Detector

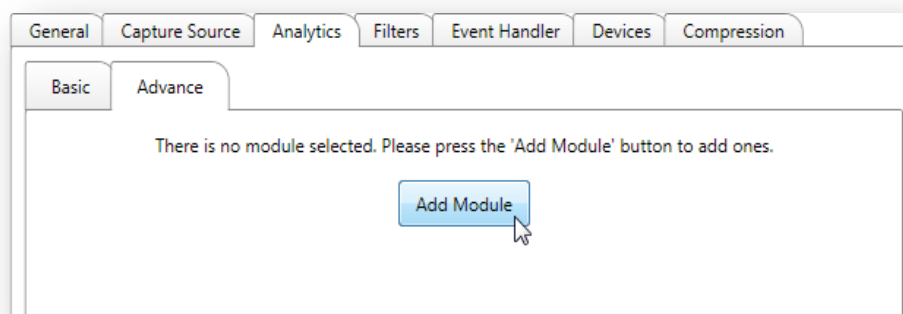
This module shall trigger alarm as it detects camera scene changed.



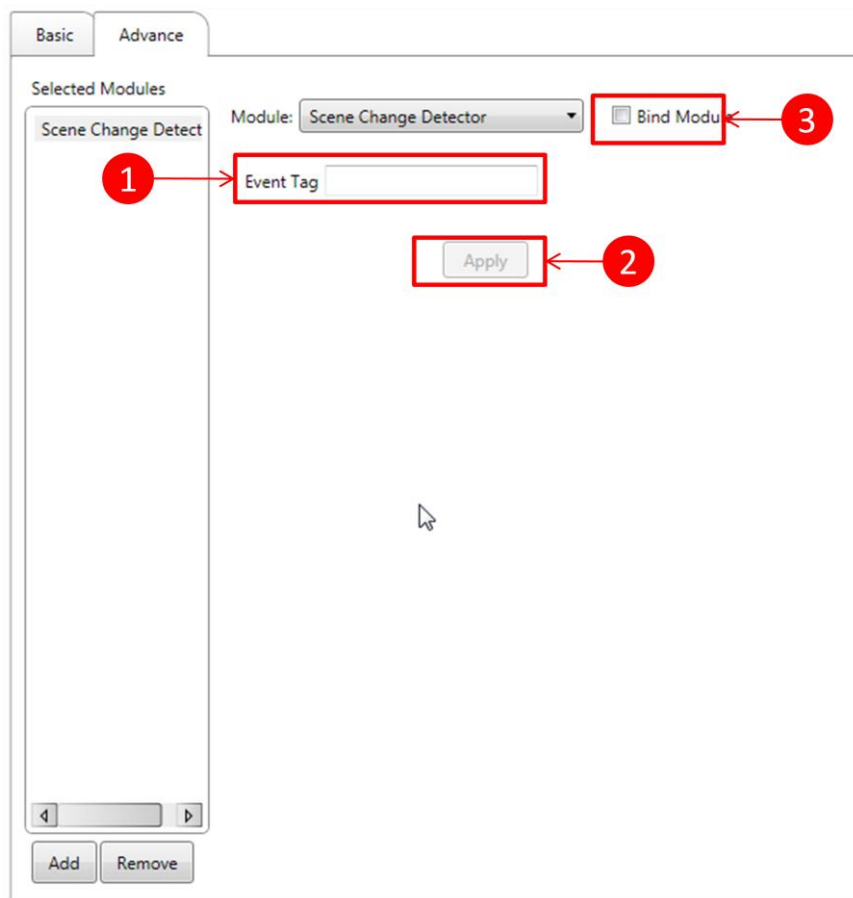
To add the module, open the “Setting Dialog” and select “Channel Settings”:



Select the “Analytics” – “Advance” tab, and press the “Add Module” button



Choose the “Scene Change Detector” module, you should see the dialog as follow:



- 1) **Event Tag**— here user can define the tag of the event.
- 2) **“Apply” button** – confirm changes by clicking this button.
- 3) **“Bind Module ” checkbox**—to deploy the module on the channel.