

Exam : Cisco 640-802

**Title : Cisco Certified
Network Associate
(CCNA)**

Version : Demo

Cheat-Test, [help you pass any IT exam!](#)

1. Refer to the exhibit. What could be possible causes for the "Serial0/0 is down" interface status? (Choose two.)

```
Router1#show interfaces serial 0/0
```

```
Serial0/0 is down, line protocol is down
Hardware is MK5025
Serial Internet address is 10.1.1.2/24
MTU 1500 bytes, BW 1544 Kbits, DLY 20000 usec, rely 255/255, load 9/255
Encapsulation PPP, loopback not set, keepalive set (10 sec)
<some output omitted>
```

- A. A Layer 1 problem exists.
- B. The bandwidth is set too low.
- C. A protocol mismatch exists.
- D. An incorrect cable is being used.
- E. There is an incorrect IP address on the Serial 0/0 interface.

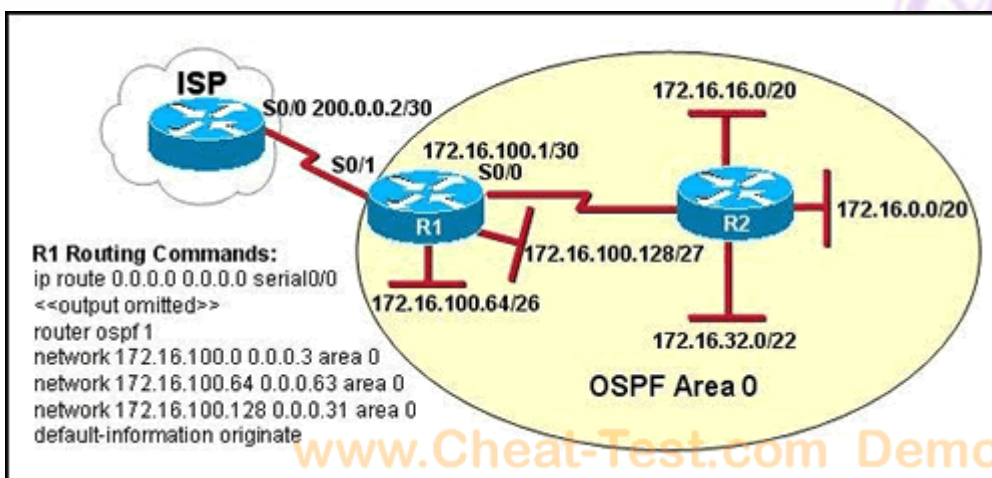
Answer: A, D

2. The network administrator has discovered that the power supply has failed on a switch in the company LAN and that the switch has stopped functioning. It has been replaced with a Cisco Catalyst 2950 series switch. What must be done to ensure that this new switch becomes the root bridge on the network?

- A. Lower the bridge priority number.
- B. Change the MAC address of the switch.
- C. Increase the VTP revision number for the domain.
- D. Lower the root path cost on the switch ports.
- E. Assign the switch an IP address with the lowest value.

Answer: A

3. Refer to the exhibit. Assume that all of the router interfaces are operational and configured correctly. How will router R2 be affected by the configuration of R1 that is shown in the exhibit?



- A. Router R2 will not form a neighbor relationship with R1.
- B. Router R2 will obtain a full routing table, including a default route, from R1.
- C. R2 will obtain OSPF updates from R1, but will not obtain a default route from R1.
- D. R2 will not have a route for the directly connected serial network, but all other directly connected networks will be present, as well as the two Ethernet networks connected to R1.

Answer: A

4. Before installing a new, upgraded version of the IOS, what should be checked on the router, and which command should be used to gather this information? (Choose two.)

- A. the amount of available ROM
- B. the amount of available flash and RAM memory
- C. the version of the bootstrap software present on the router
- D. show version
- E. show processes
- F. show running-config

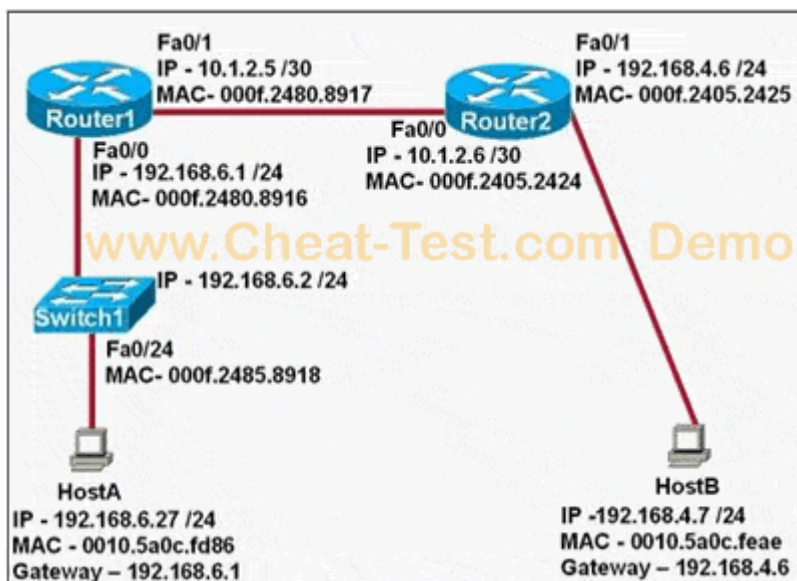
Answer: B, D

5. Which three IP addresses can be assigned to hosts if the subnet mask is /27 and subnet zero is usable? (Choose three.)

- A. 10.15.32.17
- B. 17.15.66.128
- C. 66.55.128.1
- D. 135.1.64.34
- E. 129.33.192.192
- F. 192.168.5.63

Answer: A, C, D

6. Refer to the exhibit. After HostA pings HostB, which entry will be in the ARP cache of HostA to support this transmission?



A.

Interface Address	Physical Address	Type
192.168.4.7	000f.2480.8916	dynamic

B.

Interface Address	Physical Address	Type
192.168.4.7	0010.5a0c.feae	dynamic

C.

Interface Address	Physical Address	Type
192.168.6.1	0010.5a0c.feae	dynamic

D.

Interface Address	Physical Address	Type
192.168.6.1	000f.2480.8916	dynamic

E.

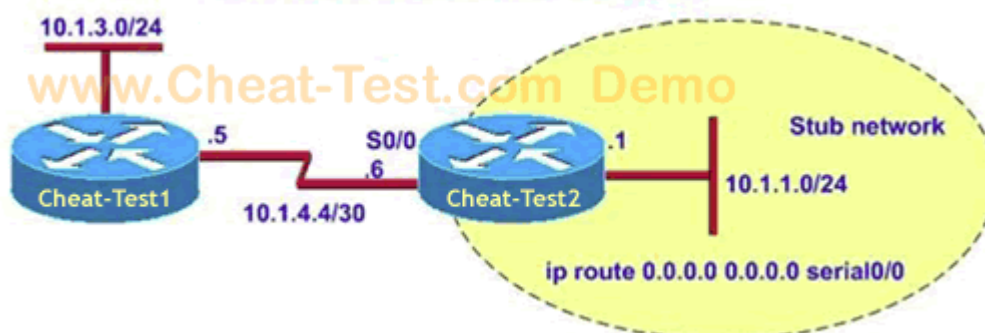
Interface Address	Physical Address	Type
192.168.6.2	0010.5a0c.feae	dynamic

F.

Interface Address	Physical Address	Type
192.168.6.2	000f.2485.8918	dynamic

Answer: D

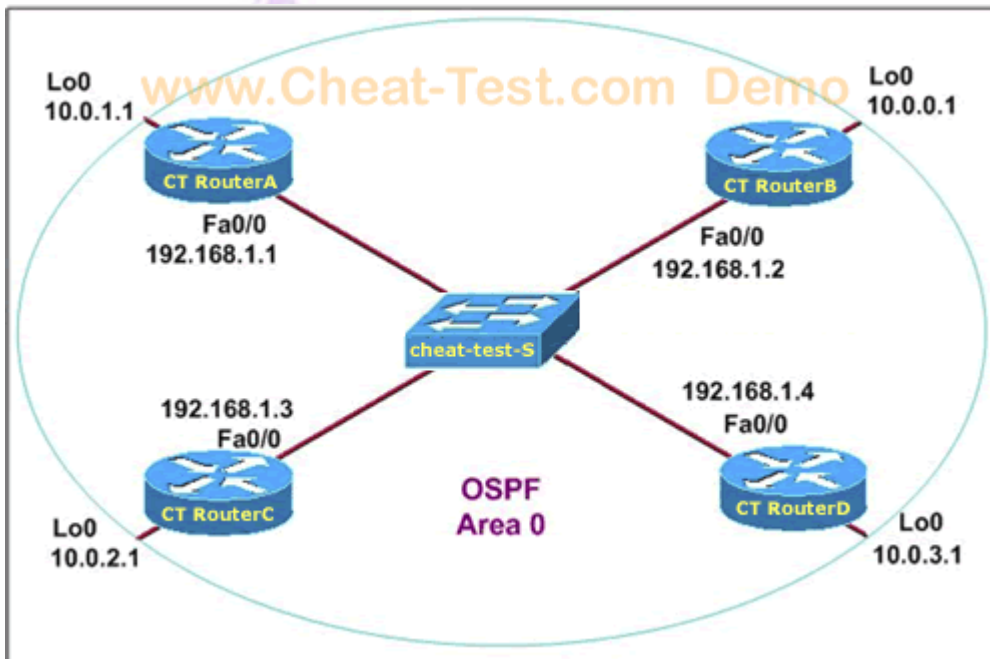
7. Part of the Cheat-Test WAN is shown below: In this Cheat-Test network segment, subnet 10.1.3.0/24 is unknown to router Cheat-Test2. Which router command will prevent router Cheat-Test2 from dropping a packet destined for the 10.1.3.0/24 network if a default route is configured?



- A. ip classless
- B. network 10.1.1.0
- C. ip default-network
- D. network 10.10.1.0 0.0.0.255 area 1

Answer: A

8. Refer to the exhibit. Which two statements are true about the loopback address that is configured on CT RouterB? (Choose two.)



- A. It ensures that data will be forwarded by CT RouterB.
- B. It provides stability for the OSPF process on CT RouterB.
- C. It specifies that the router ID for CT RouterB should be 10.0.0.1.
- D. It decreases the metric for routes that are advertised from CT RouterB.
- E. It indicates that CT RouterB should be elected the DR for the LAN.

Answer: B, C

9. What will a new Cheat-Test router do during startup if a configuration file is not located in NVRAM?

- A. It will search for the configuration file on a TFTP server and if no configuration file is found there, it will load a limited configuration file from ROM.
- B. It will search for the configuration file in flash and if no configuration file is found there, it will enter the setup dialog.
- C. It will search for the configuration file on a TFTP server and if no configuration file is found there, it will enter the setup dialog.
- D. It will search for the configuration file in flash and if no configuration file is found there, it will load a limited configuration file from ROM.

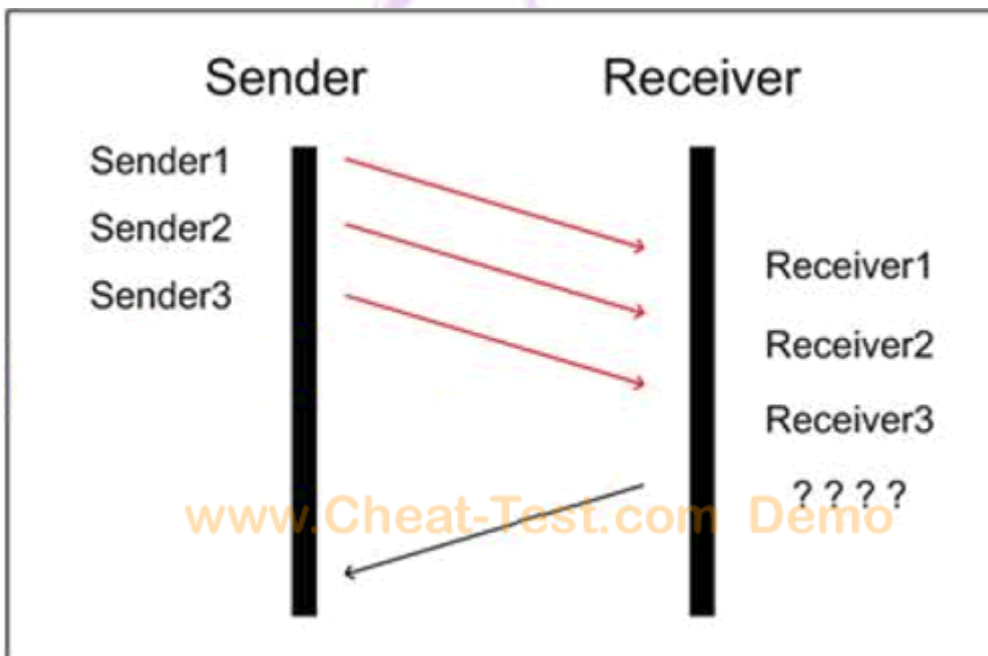
Answer: C

10. A network administrator is explaining VTP configuration to a new technician. What should the network administrator tell the new technician about VTP configuration? (Choose three.)

- A. A switch in the VTP client mode cannot update its local VLAN database.
- B. A trunk link must be configured between the switches to forward VTP updates.
- C. A switch in the VTP server mode can update a switch in the VTP transparent mode.
- D. A switch in the VTP transparent mode will forward updates that it receives to other switches.
- E. A switch in the VTP server mode only updates switches in the VTP client mode that have a higher VTP revision number.
- F. A switch in the VTP server mode will update switches in the VTP client mode regardless of the configured VTP domain membership.

Answer: A, B, D

11. A TCP/IP transfer is diagrammed in the exhibit. A window size of three has been negotiated for this transfer. Which message will be returned from the receiver to the sender as part of this TCP/IP transfer?



- A. send ACK 1-3
- B. send ACK 3
- C. send ACK 4
- D. send ACK 4-6

Answer: C

12. Which two locations can be configured as a source for the IOS image in the boot system command? (Choose two.)

- A. RAM
- B. NVRAM
- C. flash memory
- D. HTTP server
- E. TFTP server
- F. Telnet server

Answer: C, E

13. What are two reasons a network administrator would use CDP? (Choose two.)

- A. to verify the type of cable interconnecting two devices
- B. to determine the status of network services on a remote device
- C. to obtain VLAN information from directly connected switches
- D. to verify Layer 2 connectivity between two devices when Layer 3 fails
- E. to obtain the IP address of a connected device in order to telnet to the device
- F. to determine the status of the routing protocols between directly connected routers

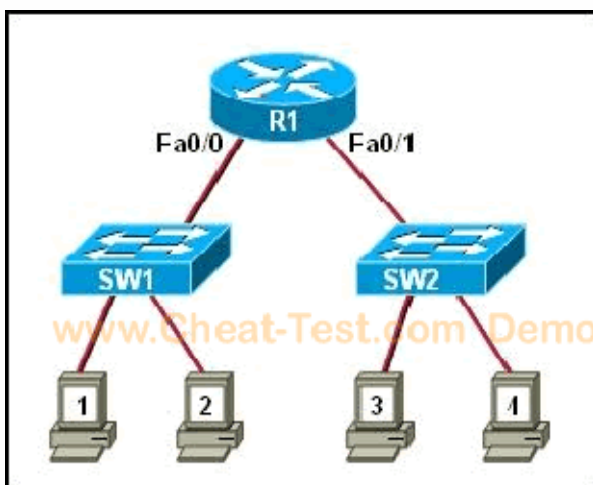
Answer: D, E

14. What are three characteristics of the OSPF routing protocol? (Choose three.)

- A. It converges quickly.
- B. OSPF is a classful routing protocol.
- C. It uses cost to determine the best route.
- D. It uses the DUAL algorithm to determine the best route.
- E. OSPF routers send the complete routing table to all directly attached routers.
- F. OSPF routers discover neighbors before exchanging routing information.

Answer: A, C, F

15. Refer to the exhibit. Both switches are using a default configuration. Which two destination addresses will host 4 use to send data to host 1? (Choose two.)

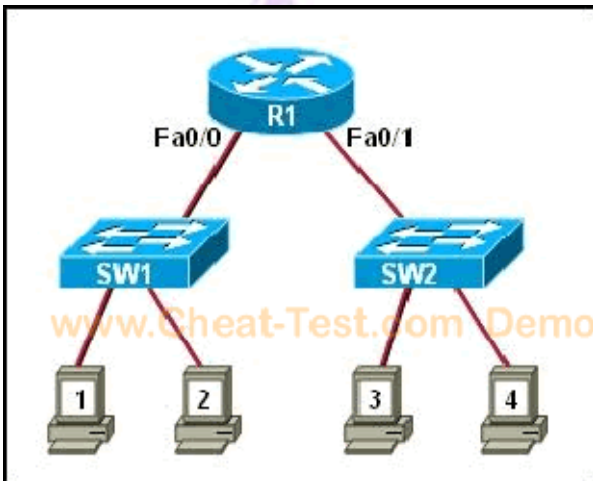


- A. the IP address of host 1
- B. the IP address of host 4

- C. the MAC address of host 1
- D. the MAC address of host 4
- E. the MAC address of the Fa0/0 interface of the R1 router
- F. the MAC address of the Fa0/1 interface of the R1 router

Answer: A, F

16. Refer to the exhibit. SW1 and SW2 have default configurations. What will happen if host 1 sends a broadcast?



- A. Hosts 2, 3, and 4 will receive the broadcast.
- B. Hosts 1, 2, 3, and 4 will receive the broadcast.
- C. Host 2 and the Fa0/0 interface of R1 will receive the broadcast.
- D. Hosts 1, 2 and the Fa0/0 interface of R1 will receive the broadcast.
- E. Hosts 1, 2, 3, 4 and interface Fa0/0 of R1 will receive the broadcast.
- F. Hosts 2, 3, 4, and interfaces Fa0/0 and Fa0/1 of R1 will receive the broadcast.

Answer: C

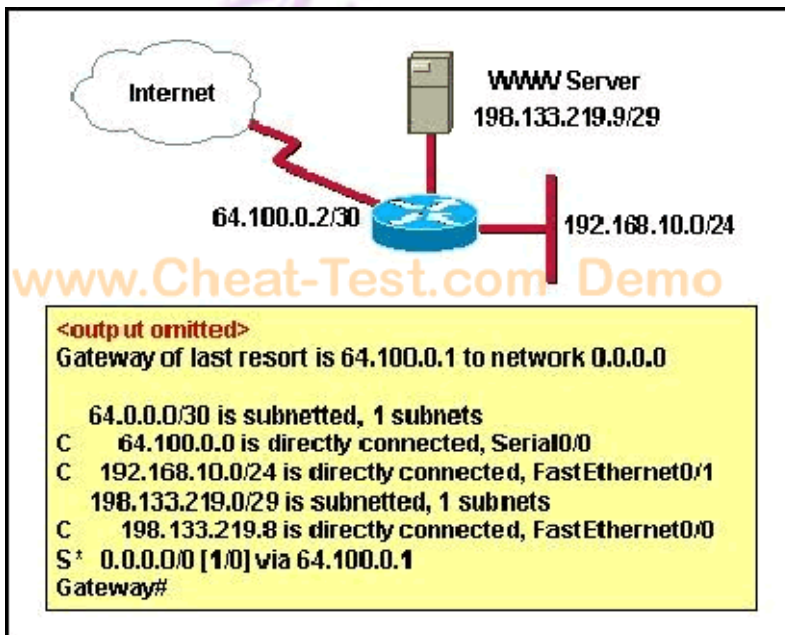
17. A router has learned three possible routes that could be used to reach a destination network. One route is from EIGRP and has a composite metric of 20514560. Another route is from OSPF with a metric of 782. The last is from RIPv2 and has a metric of 4. Which route or routes will the router install in the routing table?

- A. the OSPF route
- B. the EIGRP route
- C. the RIPv2 route
- D. all three routes
- E. the OSPF and RIPv2 routes

Answer: B

18. Refer to the exhibit. The router has been configured with these commands:


```
hostname Gateway
interface FastEthernet 0/0
  ip address 198.133.219.14 255.255.255.248
  no shutdown
interface FastEthernet 0/1
  ip address 192.168.10.254 255.255.255.0
  no shutdown
interface Serial 0/0
  ip address 64.100.0.2 255.255.255.252
  no shutdown
ip route 0.0.0.0 0.0.0.0 64.100.0.1
What are the two results of this configuration? (Choose two.)
```



- A. The default route should have a next hop address of 64.100.0.3.
- B. Hosts on the LAN that is connected to FastEthernet 0/1 are using public IP addressing.
- C. The address of the subnet segment with the WWW server will support seven more servers.
- D. The addressing scheme allows users on the Internet to access the WWW server.
- E. Hosts on the LAN that is connected to FastEthernet 0/1 will not be able to access the Internet without address translation.

Answer: D, E

19. A company is installing IP phones. The phones and office computers connect to the same device. To ensure maximum throughput for the phone data, the company needs to make sure that the phone traffic is on a different network from that of the office computer data traffic. What is the best network device to which to directly connect the phones and computers, and what technology should be implemented on this device? (Choose two.)

- A. hub
- B. router
- C. switch
- D. STP
- E. subinterfaces
- F. VLAN

Answer: C, F

20. For what two purposes does the Ethernet protocol use physical addresses? (Choose two.)

- A. to uniquely identify devices at Layer 2
- B. to allow communication with devices on a different network
- C. to differentiate a Layer 2 frame from a Layer 3 packet
- D. to establish a priority system to determine which device gets to transmit first
- E. to allow communication between different devices on the same network
- F. to allow detection of a remote device when its physical address is unknown

Answer: A, E

Cheat-Test.com - The Worldwide Renowned IT Certification Material Provider!
The safer, easier way to help you pass any IT Certification exams.

We provide high quality IT Certification exams practice questions and answers (Q&A). Especially [Cisco](#), [Microsoft](#), [HP](#), [IBM](#), [Oracle](#), [CompTIA](#), [Adobe](#), [Apple](#), [Citrix](#), [EMC](#), [Lotus](#), [Nortel](#), [SUN](#) and so on.
And help you pass any IT Certification exams at the first try.

Cheat-Test product Features:

- Verified Answers Researched by Industry Experts
- Questions updated on regular basis
- Like actual certification exams our product is in multiple-choice questions (MCQs).
- Our questions and answers are backed by our GUARANTEE.

7x24 online customer service: contact@cheat-test.com

Click Here to get more Free Cheat-Test Certification exams!

<http://www.Cheat-Test.com>